

BSA Antibody

Catalog No: #AB35643

Orders: order@abscitech.comSupport: tech@abscitech.com

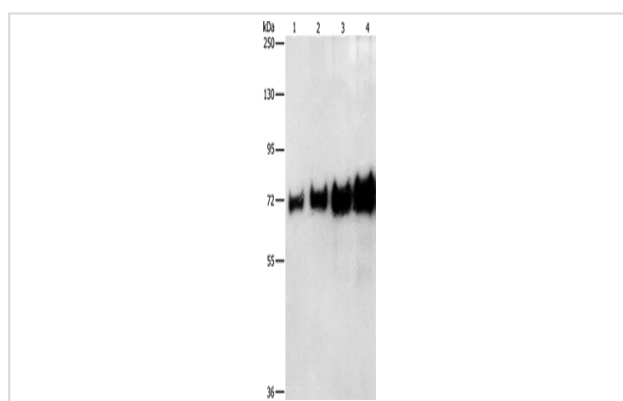
Description

Product Name	BSA Antibody
Host Species	Rabbit
Clonality	Polyclonal
Purification	Antigen affinity purification.
Applications	WB
Species Reactivity	Bovine
Specificity	The antibody detects endogenous levels of total BSA protein.
Immunogen Type	Recombinant Protein
Immunogen Description	Fusion protein corresponding to a region derived from internal residues of human Bovine serum albumin
Target Name	BSA
Other Names	ALB; ALBU; albumin; cell growth inhibiting protein 42; DKFZp779N1935
Accession No.	Swiss-Prot#: P02769NCBI Gene ID: 280717Gene Accssion: NP_851335
SDS-PAGE MW	69kd
Concentration	0.7mg/ml
Formulation	Rabbit IgG in pH7.3 PBS, 0.05% NaN ₃ , 50% Glycerol.
Storage	Store at -20°C

Application Details

Western blotting: 1:1000-1:5000

Images



Gel: 8%SDS-PAGE, Lysate: 0.05-0.4 Ξ Og, Lane 1-4: 0.05 Ξ Og, 0.1 Ξ Og, 0.2 Ξ Og, 0.4 Ξ Og BSA, Primary antibody: AB35643oO BSA Antibody) at dilution 1/1150, Secondary antibody: Goat anti rabbit IgG at 1/8000 dilution, Exposure time: 1 second

Background

Serum albumin, the main protein of plasma, has a good binding capacity for water, Ca²⁺, Na⁺, K⁺, fatty acids, hormones, bilirubin and drugs. Its main function is the regulation of the colloidal osmotic pressure of blood. Major zinc transporter in plasma, typically binds about 80% of all plasma zinc.

Note: This product is for in vitro research use only and is not intended for use in humans or animals.