

# LAMP1 Antibody

Catalog No: #AB35308



Package Size: #AB35308-1 50ul #AB35308-2 100ul

Orders: [order@abscitech.com](mailto:order@abscitech.com)  
Support: [tech@abscitech.com](mailto:tech@abscitech.com)

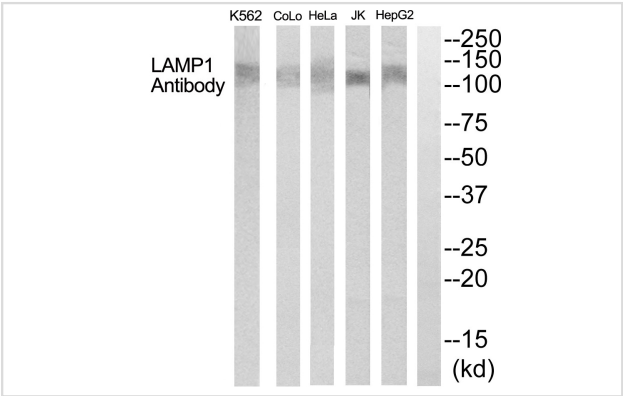
## Description

Product Name	LAMP1 Antibody
Host Species	Rabbit
Clonality	Polyclonal
Purification	The antibody was affinity-purified from rabbit antiserum by affinity-chromatography using epitope-specific immunogen.
Applications	WB
Species Reactivity	Hu
Specificity	The antibody detects endogenous levels of total LAMP1 protein.
Immunogen Type	Peptide
Immunogen Description	Synthesized peptide derived from internal of human LAMP1.
Target Name	LAMP1
Other Names	Lysosome-associated membrane glycoprotein 1; Lysosome-associated membrane protein 1; LAMP-1; CD107 antigen-like family member A; CD107a
Accession No.	Swiss-Prot: P11279NCBI Gene ID: 3916
SDS-PAGE MW	125kd
Concentration	1.0mg/ml
Formulation	Rabbit IgG in phosphate buffered saline (without Mg2+ and Ca2+), pH 7.4, 150mM NaCl, 0.02% sodium azide and 50% glycerol.
Storage	Store at -20°C

## Application Details

Western blotting: 1:500~1:3000

## Images



Western blot analysis of extracts from K562, COLO205, HeLa, Jurkat and HepG2 cells, using LAMP1 antibody #AB35308.

## Background

---

Presents carbohydrate ligands to selectins. Also implicated in tumor cell metastasis.

ss M.T., Nature 428:522-528(2004).

Venter J.C., Submitted (JUL-2005).

Hasilik A., Traffic 8:1676-1686(2007).

---

Note: This product is for in vitro research use only and is not intended for use in humans or animals.