

CNPase Antibody

Catalog No: #AB21639



Package Size: #AB21639-1 50ul #AB21639-2 100ul #AB21639-4 25ul

Orders: order@abscitech.comSupport: tech@abscitech.com

Description

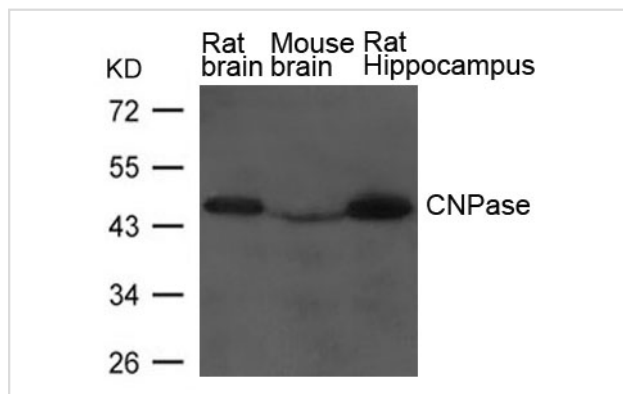
Product Name	CNPase Antibody
Host Species	Rabbit
Clonality	Polyclonal
Purification	Antibodies were produced by immunizing rabbits with synthetic peptide and KLH conjugates. Antibodies were purified by affinity-chromatography using epitope-specific peptide.
Applications	WB
Species Reactivity	Hu Ms Rt
Specificity	The antibody detects endogenous level of total CNPase protein.
Immunogen Type	Peptide-KLH
Immunogen Description	Peptide sequence around aa.80~84 (M-V-S-A-D
Target Name	CNPase
Other Names	CNP1
Accession No.	Swiss-Prot: P09543NCBI Protein: NP_149124.3
Concentration	1.0mg/ml
Formulation	Supplied at 1.0mg/mL in phosphate buffered saline (without Mg ²⁺ and Ca ²⁺), pH 7.4, 150mM NaCl, 0.02% sodium azide and 50% glycerol.
Storage	Store at -20°C for long term preservation (recommended). Store at 4°C for short term use.

Application Details

Predicted MW: 47kd

Western blotting: 1:500~1:1000

Images



Western blot analysis of extract from Rat brain, Mouse brain and Rat hippocampus Tissue using CNPase Antibody #AB21639

Background

Nucleoside 2',3'-cyclic phosphate + H₂O = nucleoside 2'-phosphate.

Note: This product is for in vitro research use only and is not intended for use in humans or animals.