

## MAP2 Antibody

Catalog No: #AB21636



Package Size: #AB21636-1 50ul #AB21636-2 100ul #AB21636-4 25ul

Orders: [order@abscitech.com](mailto:order@abscitech.com)Support: [tech@abscitech.com](mailto:tech@abscitech.com)

## Description

Product Name	MAP2 Antibody
Host Species	Rabbit
Clonality	Polyclonal
Purification	Antibodies were produced by immunizing rabbits with synthetic peptide and KLH conjugates. Antibodies were purified by affinity-chromatography using epitope-specific peptide.
Applications	WB IF
Species Reactivity	Hu Ms Rt
Specificity	The antibody detects endogenous level of total MAP2 protein.
Immunogen Type	Peptide-KLH
Immunogen Description	Peptide sequence around aa.1819~1823 (T-A-A-L-A) derived from Human MAP2.
Target Name	MAP2
Other Names	MAP2A; MAP2B; MAP2C
Accession No.	Swiss-Prot: P11137NCBI Protein: NP_002365.3
Concentration	1.0mg/ml
Formulation	Supplied at 1.0mg/mL in phosphate buffered saline (without Mg <sup>2+</sup> and Ca <sup>2+</sup> ), pH 7.4, 150mM NaCl, 0.02% sodium azide and 50% glycerol.
Storage	Store at -20°C for long term preservation (recommended). Store at 4°C for short term use.

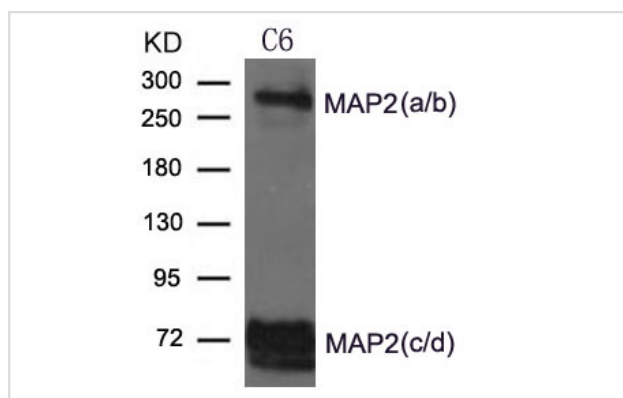
## Application Details

Predicted MW: 55-75(2c/2d), 280(2a/2b)kd

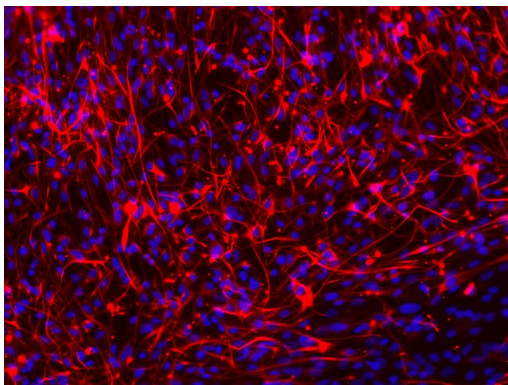
Western blotting: 1:500~1:1000

Immunofluorescence: 1:100~1:200

## Images



Western blot analysis of extract from C6 cells using MAP2 Antibody #AB21636



Immunofluorescence staining of paraffin-embedded Glioma cells of Spinal Cord using MAP2 Antibody #AB21636.

## Background

The exact function of MAP2 is unknown but MAPs may stabilize the microtubules against depolymerization. They also seem to have a stiffening effect on microtubules.

DeGiorgis J.A., Jaffe H., Moreira J.E., Carlotti C.G. Jr. Proteome Res. 4:306-315(2005)

Olsen J.V., Blagoev B., Gnäd F., Macek B. Mann M. Cell 127:635-648(2006)

Matsuoka S., Ballif B.A., Smogorzewska A., McDonald E.R. Science 316:1160-1166(2007)

**Note:** This product is for in vitro research use only and is not intended for use in humans or animals.