

## Id2 Antibody

Catalog No: #AB21620



Package Size: #AB21620-1 50ul #AB21620-2 100ul #AB21620-4 25ul

Orders: [order@abscitech.com](mailto:order@abscitech.com)Support: [tech@abscitech.com](mailto:tech@abscitech.com)

## Description

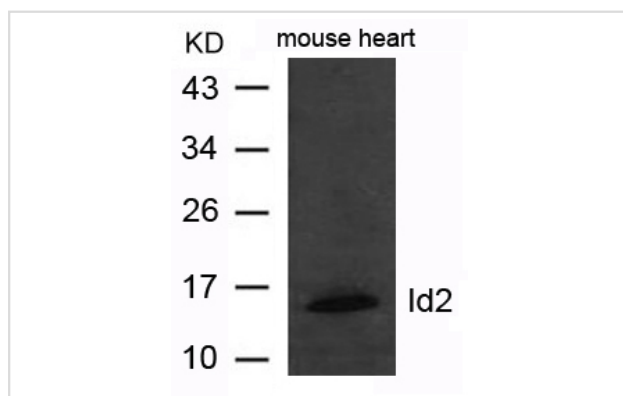
Product Name	Id2 Antibody
Host Species	Rabbit
Clonality	Polyclonal
Purification	Antibodies were produced by immunizing rabbits with synthetic peptide and KLH conjugates. Antibodies were purified by affinity-chromatography using epitope-specific peptide.
Applications	WB
Species Reactivity	Hu Ms Rt
Specificity	The antibody detects endogenous level of total Id2 protein.
Immunogen Type	Peptide-KLH
Immunogen Description	Peptide sequence around aa.5~9(S-P-V-R-S) derived from Human Id2.
Target Name	Id2
Other Names	GIG8; ID2A; ID2H
Accession No.	Swiss-Prot: Q02363NCBI Protein: NP_002157.2
Concentration	1.0mg/ml
Formulation	Supplied at 1.0mg/mL in phosphate buffered saline (without Mg2+ and Ca2+), pH 7.4, 150mM NaCl, 0.02% sodium azide and 50% glycerol.
Storage	Store at -20°C for long term preservation (recommended). Store at 4°C for short term use.

## Application Details

Predicted MW: 15kd

Western blotting: 1:500~1:1000

## Images



Western blot analysis of extract from mouse heart tissue using Id2 Antibody #AB21620

## Background

ID (inhibitor of DNA binding) HLH proteins lack a basic DNA-binding domain but are able to form heterodimers with other HLH proteins, thereby

inhibiting DNA binding. ID-2 may be an inhibitor of tissue-specific gene expression.  
The MGC Project TeamGenome Res. 14:2121-2127(2004)

---

Note: This product is for in vitro research use only and is not intended for use in humans or animals.