

## GAD65(GAD2) Antibody

Catalog No: #AB21611



Package Size: #AB21611-1 50ul #AB21611-2 100ul #AB21611-4 25ul

Orders: order@abscitech.com

Support: tech@abscitech.com

## Description

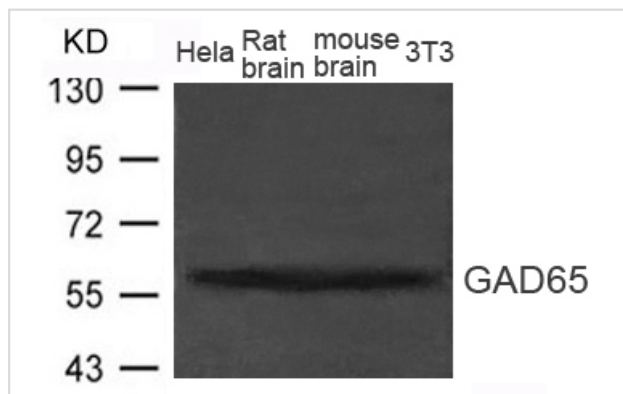
Product Name	GAD65(GAD2) Antibody
Host Species	Rabbit
Clonality	Polyclonal
Purification	Antibodies were produced by immunizing rabbits with synthetic peptide and KLH conjugates. Antibodies were purified by affinity-chromatography using epitope-specific peptide.
Applications	WB
Species Reactivity	Hu Ms Rt
Specificity	The antibody detects endogenous level of total GAD65 (GAD2)protein.
Immunogen Type	Peptide-KLH
Immunogen Description	Peptide sequence around aa.148~152 (E-L-A-D-Q) derived from Human GAD65 (GAD2).
Target Name	GAD65(GAD2)
Other Names	MGC161605; MGC161607;
Accession No.	Swiss-Prot: Q05329NCBI Protein: NP_000809.1
Concentration	1.0mg/ml
Formulation	Supplied at 1.0mg/mL in phosphate buffered saline (without Mg <sup>2+</sup> and Ca <sup>2+</sup> ), pH 7.4, 150mM NaCl, 0.02% sodium azide and 50% glycerol.
Storage	Store at -20°C for long term preservation (recommended). Store at 4°C for short term use.

## Application Details

Predicted MW: 60kd

Western blotting: 1:500~1:1000

## Images



Western blot analysis of extract from Rat brain, Mouse brain tissue and HeLa, 3T3 cells using GAD65(GAD2)) Antibody #AB21611

## Background

Catalyzes the production of GABA.

---

Note: This product is for in vitro research use only and is not intended for use in humans or animals.