

## FOXP4 Antibody

Catalog No: #AB21609



Package Size: #AB21609-1 50ul #AB21609-2 100ul #AB21609-4 25ul

Orders: [order@abscitech.com](mailto:order@abscitech.com)Support: [tech@abscitech.com](mailto:tech@abscitech.com)

## Description

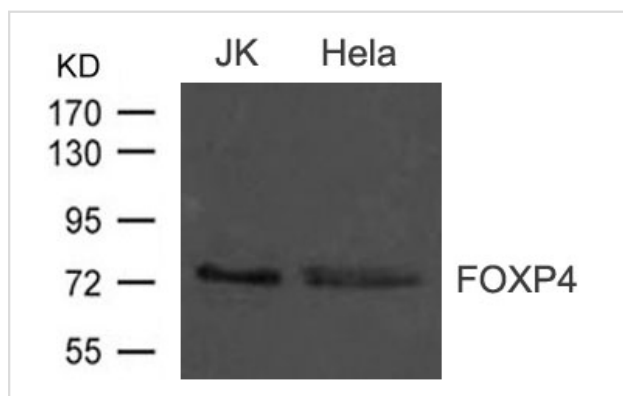
Product Name	FOXP4 Antibody
Host Species	Rabbit
Clonality	Polyclonal
Purification	Antibodies were produced by immunizing rabbits with synthetic peptide and KLH conjugates. Antibodies were purified by affinity-chromatography using epitope-specific peptide.
Applications	WB
Species Reactivity	Hu Ms Rt
Specificity	The antibody detects endogenous level of total FOXP4 protein.
Immunogen Type	Peptide-KLH
Immunogen Description	Peptide sequence around aa.7~11(S-E-T-I-R) derived from Human FOXP4.
Target Name	FOXP4
Other Names	hFKHLA; FLJ40908; FLJ44184
Accession No.	Swiss-Prot: Q8IVH2NCBI Protein: NP_001012426.1
Concentration	1.0mg/ml
Formulation	Supplied at 1.0mg/mL in phosphate buffered saline (without Mg <sup>2+</sup> and Ca <sup>2+</sup> ), pH 7.4, 150mM NaCl, 0.02% sodium azide and 50% glycerol.
Storage	Store at -20°C for long term preservation (recommended). Store at 4°C for short term use.

## Application Details

Predicted MW: 74kd

Western blotting: 1:500~1:1000

## Images



Western blot analysis of extract from JK and HeLa cells using FOXP4 Antibody #AB21609

## Background

Transcriptional repressor that represses lung-specific expression.

---

Note: This product is for in vitro research use only and is not intended for use in humans or animals.