

FOXP2 Antibody

Catalog No: #AB21608



Package Size: #AB21608-1 50ul #AB21608-2 100ul #AB21608-4 25ul

Orders: order@abscitech.com

Support: tech@abscitech.com

Description

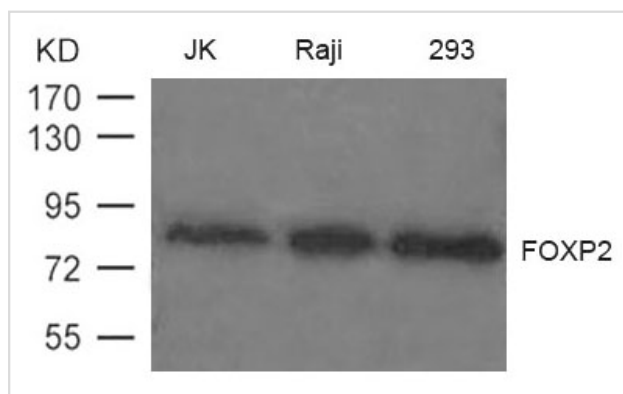
Product Name	FOXP2 Antibody
Host Species	Rabbit
Clonality	Polyclonal
Purification	Antibodies were produced by immunizing rabbits with synthetic peptide and KLH conjugates. Antibodies were purified by affinity-chromatography using epitope-specific peptide.
Applications	WB
Species Reactivity	Hu Ms Rt
Specificity	The antibody detects endogenous level of total FOXP2 protein.
Immunogen Type	Peptide-KLH
Immunogen Description	Peptide sequence around aa.707~711(E-E-P-L-S) derived from Human FOXP2.
Target Name	FOXP2
Other Names	SPCH1; CAGH44; TNRC10
Accession No.	Swiss-Prot: O15409NCBI Protein: NP_055306.1
Concentration	1.0mg/ml
Formulation	Supplied at 1.0mg/mL in phosphate buffered saline (without Mg ²⁺ and Ca ²⁺), pH 7.4, 150mM NaCl, 0.02% sodium azide and 50% glycerol.
Storage	Store at -20°C for long term preservation (recommended). Store at 4°C for short term use.

Application Details

Predicted MW: 85kd

Western blotting: 1:500~1:1000

Images



Western blot analysis of extract from JK, Raji and 293 cells using FOXP2 Antibody #AB21608

Background

Transcriptional repressor that may play a role in the specification and differentiation of lung epithelium. May also play a role in developing neural,

gastrointestinal and cardiovascular tissues. Can act with CTBP1 to synergistically repress transcription but CTPBP1 is not essential. Involved in neural mechanisms mediating the development of speech and language.

Bruce H.A., Margolis R.L.Hum. Genet. 111:136-144(2002) Teramitsu I., Kudo L.C., London S.E., Geschwind D.H., White S.A.J. Neurosci. 24:3152-3163(2004)

Note: This product is for in vitro research use only and is not intended for use in humans or animals.