

CD34 Antibody

Catalog No: #AB21469



Package Size: #AB21469-1 50ul #AB21469-2 100ul #AB21469-4 25ul

Orders: order@abscitech.com

Support: tech@abscitech.com

Description

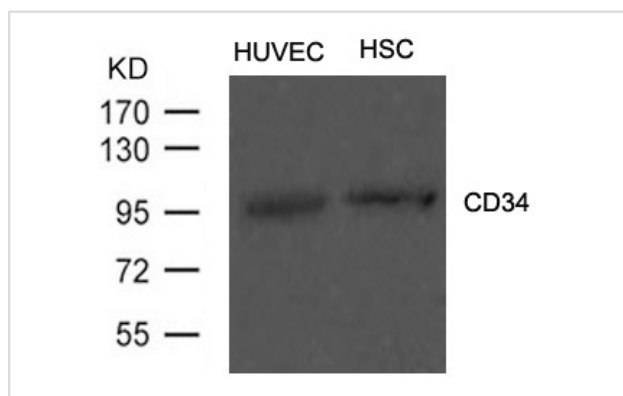
Product Name	CD34 Antibody
Host Species	Rabbit
Clonality	Polyclonal
Purification	Antibodies were produced by immunizing rabbits with synthetic peptide and KLH conjugates. Antibodies were purified by affinity-chromatography using epitope-specific peptide.
Applications	WB
Species Reactivity	Hu Ms Rt
Specificity	The antibody detects endogenous level of total CD34 protein.
Immunogen Type	Peptide-KLH
Immunogen Description	Peptide sequence around aa.377~381(Q-H-V-V-A) derived from Human CD34.
Target Name	CD34
Other Names	CD34
Accession No.	Swiss-Prot: P28906NCBI Protein: NP_001020280.1
Concentration	1.0mg/ml
Formulation	Supplied at 1.0mg/mL in phosphate buffered saline (without Mg ²⁺ and Ca ²⁺), pH 7.4, 150mM NaCl, 0.02% sodium azide and 50% glycerol.
Storage	Store at -20°C for long term preservation (recommended). Store at 4°C for short term use.

Application Details

Predicted MW: 110kd

Western blotting: 1:500~1:1000

Images



Western blot analysis of extract from HUVEC cells and Hematopoietic Stem Cells from Umbilical Cord Blood using CD34 Antibody #AB21469

Background

Possible adhesion molecule with a role in early hematopoiesis by mediating the attachment of stem cells to the bone marrow extracellular matrix or

directly to stromal cells. Could act as a scaffold for the attachment of lineage specific glycans, allowing stem cells to bind to lectins expressed by stromal cells or other marrow components. Presents carbohydrate ligands to selectins.

Fackler M.J.et.al(1990)Chem. 265:11056-11061

Note: This product is for in vitro research use only and is not intended for use in humans or animals.