

ATF2(Phospho-Thr71 or 53) Antibody

Catalog No: #AB11031



Package Size: #AB11031-1 50ul #AB11031-2 100ul #AB11031-4 25ul

Orders: order@abscitech.com

Support: tech@abscitech.com

Description

Product Name	ATF2(Phospho-Thr71 or 53) Antibody
Host Species	Rabbit
Clonality	Polyclonal
Purification	Antibodies were produced by immunizing rabbits with synthetic phosphopeptide and KLH conjugates. Antibodies were purified by affinity-chromatography using epitope-specific phosphopeptide. Non-phospho specific antibodies were removed by chromatography using non-phosphopeptide.
Applications	WB IHC
Species Reactivity	Hu Ms Rt
Specificity	The antibody detects endogenous level of ATF-2 only when phosphorylated at threonine 71 or 53.
Immunogen Type	Peptide-KLH
Immunogen Description	Peptide sequence around phosphorylation site of threonine 71 or 53 (T-P-T(p)-P-T) derived from Human ATF2.
Target Name	ATF2
Modification	Phospho-Thr71 or 53
Other Names	CREB2; CREBP1;
Accession No.	Swiss-Prot: P15336NCBI Protein: NP_001871.2
Concentration	1.0mg/ml
Formulation	Supplied at 1.0mg/mL in phosphate buffered saline (without Mg ²⁺ and Ca ²⁺), pH 7.4, 150mM NaCl, 0.02% sodium azide and 50% glycerol.
Storage	Store at -20°C for long term preservation (recommended). Store at 4°C for short term use.

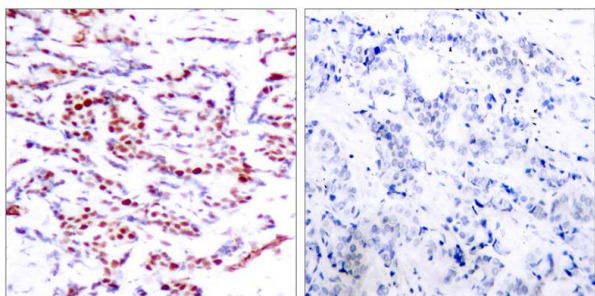
Application Details

Predicted MW: 65-75 kd

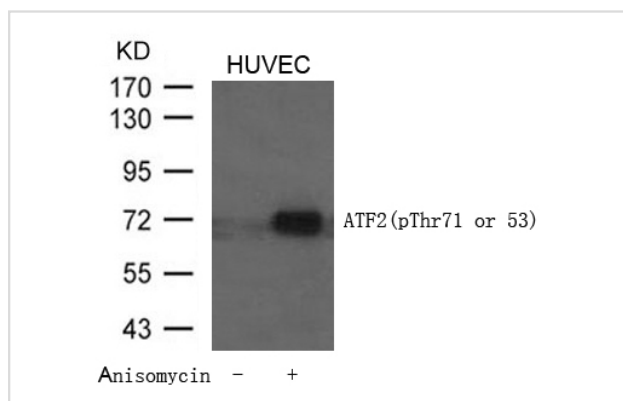
Western blotting: 1:500~1:1000

Immunohistochemistry: 1:50~1:100

Images



Immunohistochemical analysis of paraffin-embedded human breast carcinoma tissue using ATF2(Phospho-Thr71 or 53) Antibody #AB11031(left) or the same antibody preincubated with blocking peptide(right).



Western blot analysis of extracts from HUVEC cells untreated or treated with Anisomycin using ATF2 (Phospho-Thr71 or 53) Antibody #AB11031.

Background

Transcriptional activator, probably constitutive, which binds to the cAMP-responsive element (CRE) (consensus: 5'-GTGACGT[AC][AG]-3'), a sequence present in many viral and cellular promoters. Interaction with JUN redirects JUN to bind to CRES preferentially over the 12-O-tetradecanoylphorbol-13-acetate response elements (TRES) as part of an ATF2-c-Jun complex.

Sevilla A, et al. (2004) J Biol Chem. 279(26):27458-27465.

Waetzig G H, et al. (2002) J Immunol. 168(10): 5342-5351.

Abdel-Hafiz H A, et al. (1992) Mol Endocrinol. 6: 2079-2089.

Gupta S, et al. (1995) Science. 267: 389-393.

Van Dam H, et al. (1995) EMBO J. 14(8): 1798-1811.

Note: This product is for in vitro research use only and is not intended for use in humans or animals.