

SOX2 Antibody

Catalog No: #AB21425



Package Size: #AB21425-1 50ul #AB21425-2 100ul #AB21425-4 25ul

Orders: order@abscitech.comSupport: tech@abscitech.com

Description

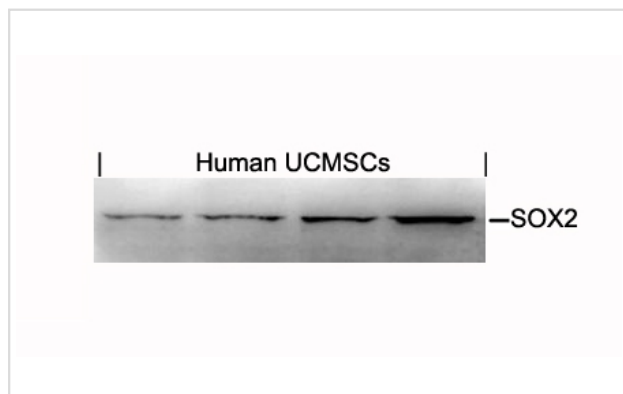
Product Name	SOX2 Antibody
Host Species	Rabbit
Clonality	Polyclonal
Purification	Antibodies were produced by immunizing rabbits with synthetic peptide and KLH conjugates. Antibodies were purified by affinity-chromatography using epitope-specific peptide.
Applications	WB
Species Reactivity	Hu Ms Rt
Specificity	The antibody detects endogenous level of total SOX2 protein.
Immunogen Type	Peptide-KLH
Immunogen Description	Peptide sequence around aa.76~80 (G-A-E-W-K) derived from SOX2
Target Name	SOX2
Other Names	Transcription factor SOX-2
Accession No.	Swiss-Prot: P48431NCBI Protein: NP_003097.1
Concentration	1.0mg/ml
Formulation	Supplied at 1.0mg/mL in phosphate buffered saline (without Mg ²⁺ and Ca ²⁺), pH 7.4, 150mM NaCl, 0.02% sodium azide and 50% glycerol.
Storage	Store at -20°C for long term preservation (recommended). Store at 4°C for short term use.

Application Details

Predicted MW: 35kd

Western blotting: 1:1000

Images



Western blot analysis of extracts from human Umbilical cord mesenchymal stem cell using SOX2 Antibody #AB21425.

Background

Transcription factor that forms a trimeric complex with OCT4 on DNA and controls the expression of a number of genes involved in embryonic

development such as YES1, FGF4, UTF1 and ZFP206. Critical for early embryogenesis and for embryonic stem cell pluripotency

Yuan H, et al. Genes Dev. 1995 Nov 1;9(21):2635-45

Muta M, et al. Genes Cells 2002 Aug;7(8):791-805

Tomioka M, et al. Nucleic Acids Res. 2002 Jul 15; 30(14): 3202-3213.

Note: This product is for in vitro research use only and is not intended for use in humans or animals.