

## SHP-1(Ab-536) Antibody

Catalog No: #AB21318



Package Size: #AB21318-1 50ul #AB21318-2 100ul #AB21318-4 25ul

Orders: [order@abscitech.com](mailto:order@abscitech.com)Support: [tech@abscitech.com](mailto:tech@abscitech.com)

## Description

Product Name	SHP-1(Ab-536) Antibody
Host Species	Rabbit
Clonality	Polyclonal
Purification	Antibodies were produced by immunizing rabbits with synthetic peptide and KLH conjugates. Antibodies were purified by affinity-chromatography using epitope-specific peptide.
Applications	WB IHC IF
Species Reactivity	Hu Ms
Specificity	The antibody detects endogenous level of total SHP-1 protein.
Immunogen Type	Peptide-KLH
Immunogen Description	Peptide sequence around aa.534~538 (S-E-Y-G-N) derived from Human SHP-1.
Target Name	SHP-1
Other Names	70Z-SHP; EC 3.1.3.48; HCP; HCPH; Hematopoietic cell protein-tyrosine phosphatase
Accession No.	Swiss-Prot: P29350NCBI Protein: NP_002822.2
Concentration	1.0mg/ml
Formulation	Supplied at 1.0mg/mL in phosphate buffered saline (without Mg <sup>2+</sup> and Ca <sup>2+</sup> ), pH 7.4, 150mM NaCl, 0.02% sodium azide and 50% glycerol.
Storage	Store at -20°C for long term preservation (recommended). Store at 4°C for short term use.

## Application Details

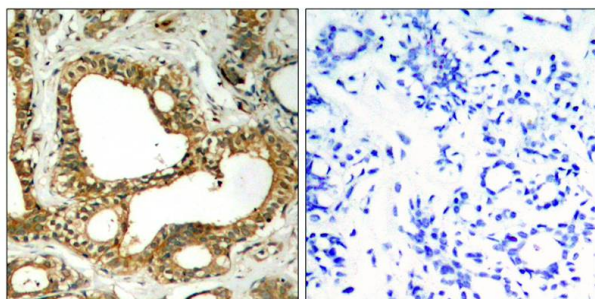
Predicted MW: 68kd

Western blotting: 1:500~1:1000

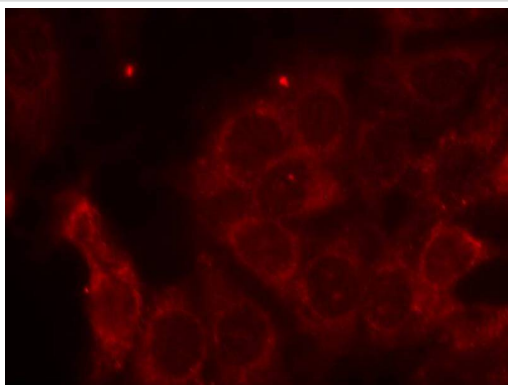
Immunohistochemistry: 1:50~1:100

Immunofluorescence: 1:100~1:200

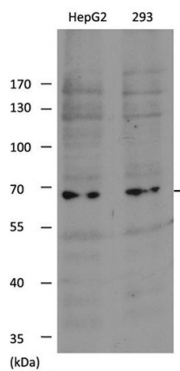
## Images



Immunohistochemical analysis of paraffin-embedded human breast carcinoma tissue using SHP-1(Ab-536) Antibody #AB21318(left) or the same antibody preincubated with blocking peptide(right).



Immunofluorescence staining of methanol-fixed MCF cells using SHP-1 (Ab-536) Antibody #AB21318.



Western blot analysis of extracts from HepG2 cells and 293 cells using SHP-1 (Ab-536) Antibody #21318.

## Background

Acts downstream of various receptor and cytoplasmic protein tyrosine kinases to participate in the signal transduction from the cell surface to the nucleus.

Migone TS, et al. (1998) Proc Natl Acad Sci USA; 95(7): 3845-3850.

Timms JF, et al.(1998) Mol Cell Biol; 18(7): 3838-3850.

**Note:** This product is for in vitro research use only and is not intended for use in humans or animals.