

# CLDN11 Antibody

Catalog No: #AB32740



Orders: [order@abscitech.com](mailto:order@abscitech.com)  
Support: [tech@abscitech.com](mailto:tech@abscitech.com)

## Description

Product Name	CLDN11 Antibody
Host Species	Rabbit
Clonality	Polyclonal
Purification	Antibodies were purified by affinity purification using immunogen.
Applications	WB IHC IF
Species Reactivity	Hu Ms Rt
Specificity	The antibody detects endogenous level of total CLDN11 protein.
Immunogen Type	Recombinant Protein
Immunogen Description	Recombinant protein of human CLDN11.
Target Name	CLDN11
Other Names	OSP; OTM;
Accession No.	Swiss-Prot:O75508NCBI Gene ID:5010
SDS-PAGE MW	22KD
Concentration	1.0mg/ml
Formulation	Supplied at 1.0mg/mL in phosphate buffered saline (without Mg2+ and Ca2+), pH 7.4, 150mM NaCl, 0.02% sodium azide and 50% glycerol.
Storage	Store at -20°C

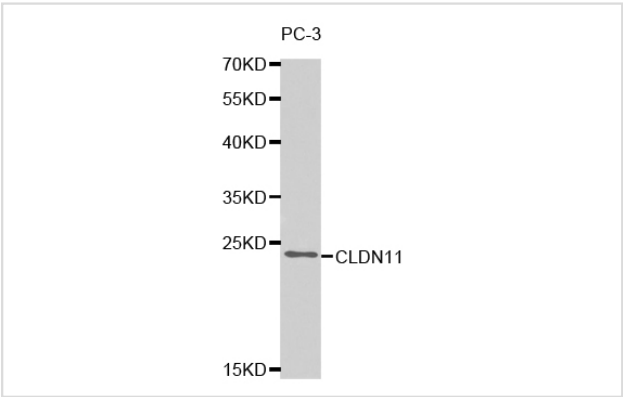
## Application Details

Western blotting: 1:500 - 1:2000

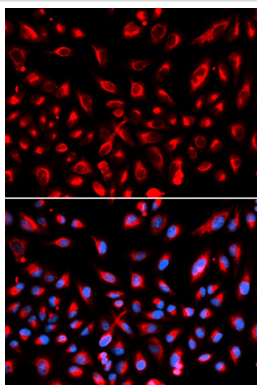
Immunohistochemistry: 1:50 - 1:200

Immunofluorescence: 1:50 - 1:200

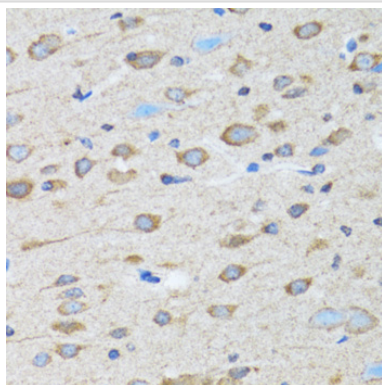
## Images



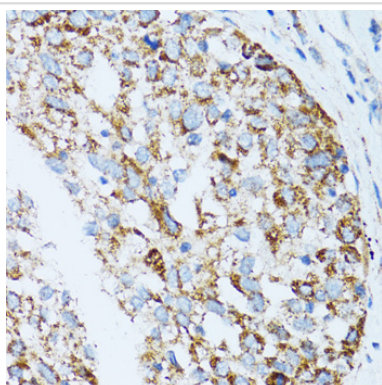
Western blot analysis of extracts of PC-3 cell line, using CLDN11 antibody.



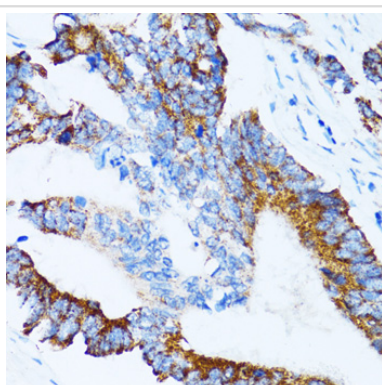
Immunofluorescence analysis of U2OS cell using CLDN11 antibody. Blue: DAPI for nuclear staining.



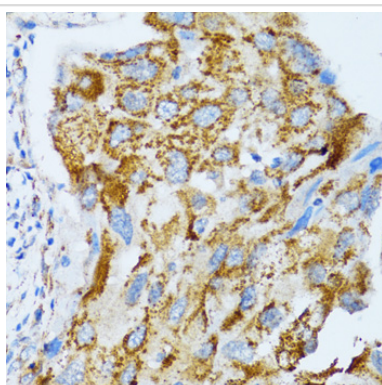
Immunohistochemistry of paraffin-embedded rat brain tissue using CLDN11 antibody at dilution of 1:100 (x40 lens).



Immunohistochemistry of paraffin-embedded human lung cancer tissue using CLDN11 antibody at dilution of 1:100 (x40 lens).



Immunohistochemistry of paraffin-embedded human colon carcinoma tissue using CLDN11 antibody at dilution of 1:100 (x40 lens).



Immunohistochemistry of paraffin-embedded human breast cancer tissue using CLDN11 antibody at dilution of 1:100 (x40 lens).

## Background

---

This gene encodes a member of the claudin family. Claudins are integral membrane proteins and components of tight junction strands. Tight junction strands serve as a physical barrier to prevent solutes and water from passing freely through the paracellular space between epithelial or endothelial cell sheets, and also play critical roles in maintaining cell polarity and signal transductions. The protein encoded by this gene is a major component of central nervous system (CNS) myelin and plays an important role in regulating proliferation and migration of oligodendrocytes. Mouse studies showed that the gene deficiency results in deafness and loss of the Sertoli cell epithelial phenotype in the testis. This protein is a tight junction protein at the human blood-testis barrier (BTB), and the BTB disruption is related to a dysfunction of this gene. Alternatively spliced transcript variants encoding different isoforms have been identified.

---

**Note:** This product is for in vitro research use only and is not intended for use in humans or animals.