

Synaptotagmin 1/2 (Ab-202/199) Antibody

Catalog No: #AB21293



Package Size: #AB21293-1 50ul #AB21293-2 100ul #AB21293-4 25ul

Orders: order@abscitech.com
Support: tech@abscitech.com

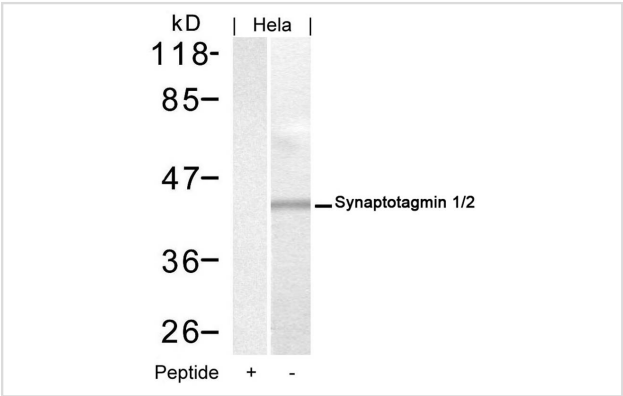
Description

| | |
|-----------------------|---|
| Product Name | Synaptotagmin 1/2 (Ab-202/199) Antibody |
| Host Species | Rabbit |
| Clonality | Polyclonal |
| Purification | Antibodies were produced by immunizing rabbits with synthetic peptide and KLH conjugates. Antibodies were purified by affinity-chromatography using epitope-specific peptide. |
| Applications | WB IF |
| Species Reactivity | Hu Ms Rt |
| Specificity | The antibody detects endogenous level of total Synaptotagmin 1/2 protein. |
| Immunogen Type | Peptide-KLH |
| Immunogen Description | Peptide sequence around aa.200~204/197~201 (R-K-T-L-N) derived from Human Synaptotagmin 1/2. |
| Target Name | Synaptotagmin 1/2 |
| Other Names | SYT1/2; Sytl/II; Synaptotagmin I/II; P65; SYT |
| Accession No. | Swiss-Prot: P21579/Q8N9I0NCBI Protein:NP_001129277.1/NP_001129976.1 |
| Concentration | 1.0mg/ml |
| Formulation | Supplied at 1.0mg/mL in phosphate buffered saline (without Mg2+ and Ca2+), pH 7.4, 150mM NaCl, 0.02% sodium azide and 50% glycerol. |
| Storage | Store at -20°C for long term preservation (recommended). Store at 4°C for short term use. |

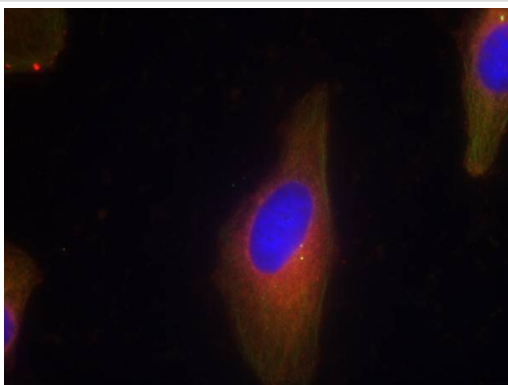
Application Details

Predicted MW: 46kd
Western blotting: 1:500~1:1000
Immunofluorescence: 1:100~1:200

Images



Western blot analysis of extracts from HeLa cells using Synaptotagmin 1/2(Ab-202/199) Antibody #AB21293 and the same antibody preincubated with blocking peptide.



Immunofluorescence staining of methanol-fixed HeLa cells using Synaptotagmin 1/2(Ab-202/199) Antibody #AB21293.

Background

The synaptotagmins are integral membrane proteins of synaptic vesicles thought to serve as Ca^{2+} sensors in the process of vesicular trafficking and exocytosis. Calcium binding to synaptotagmin I participates in triggering neurotransmitter release at the synapse

Gustavsson N, et al. Proc Natl Acad Sci U S A. 2008 Mar 11; 105(10):3992-7.

Cnops L, et al. Cereb Cortex. 2008 May; 18(5):1221-31.

Lynch KL, et al. Mol Biol Cell. 2007 Dec; 18(12):4957-68.

Note: This product is for in vitro research use only and is not intended for use in humans or animals.