

a-Synuclein(Ab-133) Antibody

Catalog No: #AB21277



Package Size: #AB21277-1 50ul #AB21277-2 100ul #AB21277-4 25ul

Orders: order@abscitech.com
Support: tech@abscitech.com

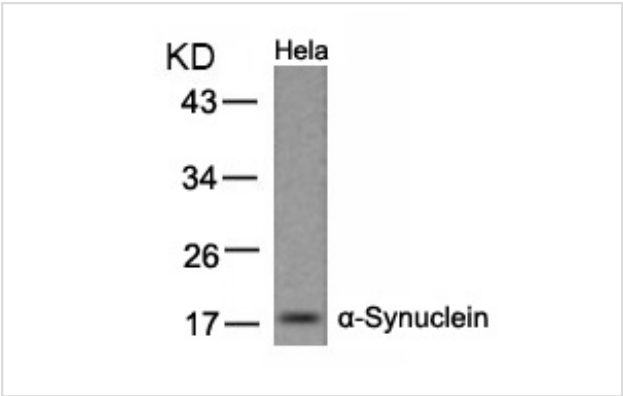
Description

Product Name	a-Synuclein(Ab-133) Antibody
Host Species	Rabbit
Clonality	Polyclonal
Purification	Antibodies were produced by immunizing rabbits with synthetic peptide and KLH conjugates. Antibodies were purified by affinity-chromatography using epitope-specific peptide.
Applications	WB IF
Species Reactivity	Hu Ms Rt
Specificity	The antibody detects endogenous level of total Synuclein protein.
Immunogen Type	Peptide-KLH
Immunogen Description	Peptide sequence around aa. 131~135 (E-G-Y-Q-D) derived from Human a-Synuclein.
Target Name	a-Synuclein
Other Names	NACP; SYN; SYUA; alpha-synuclein;
Accession No.	Swiss-Prot: P37840NCBI Protein: NP_000336.1
Concentration	1.0mg/ml
Formulation	Supplied at 1.0mg/mL in phosphate buffered saline (without Mg2+ and Ca2+), pH 7.4, 150mM NaCl, 0.02% sodium azide and 50% glycerol.
Storage	Store at -20°C for long term preservation (recommended). Store at 4°C for short term use.

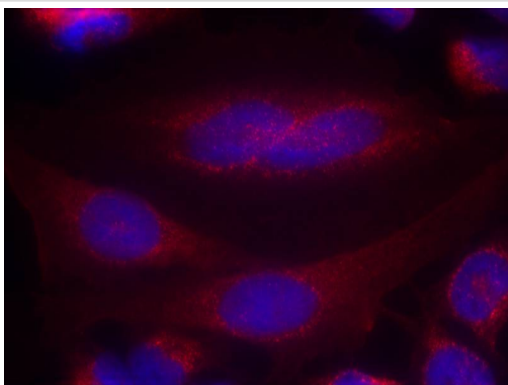
Application Details

Predicted MW: 18kd
Western blotting: 1:500~1:1000
Immunofluorescence: 1:100~1:200

Images



Western blot analysis of extracts from HeLa cells using a-Synuclein(Ab-133) Antibody #AB21277.



Immunofluorescence staining of methanol-fixed HeLa cells using anti-Synuclein (Ab-133) Antibody #AB21277.

Background

May be involved in the regulation of dopamine release and transport. Soluble protein, normally localized primarily at the presynaptic region of axons, which can form filamentous aggregates that are the major non amyloid component of intracellular inclusions in several neurodegenerative diseases (synucleinopathies). Induces fibrillization of microtubule-associated protein tau. Reduces neuronal responsiveness to various apoptotic stimuli, leading to a decreased caspase-3 activation.

Kozikowski AP, et al. (2006) ChemMedChem. 1(2):256-66.

Jakowec MW, et al. (2001) Dev Neurosci. 23(2):91-9.

El-Agnaf OM, et al. (1998) FEBS Lett. 440(1-2):67-70.

Note: This product is for in vitro research use only and is not intended for use in humans or animals.