

synapsin(Ab-9) Antibody

Catalog No: #AB21259



Package Size: #AB21259-1 50ul #AB21259-2 100ul #AB21259-4 25ul

Orders: order@abscitech.comSupport: tech@abscitech.com

Description

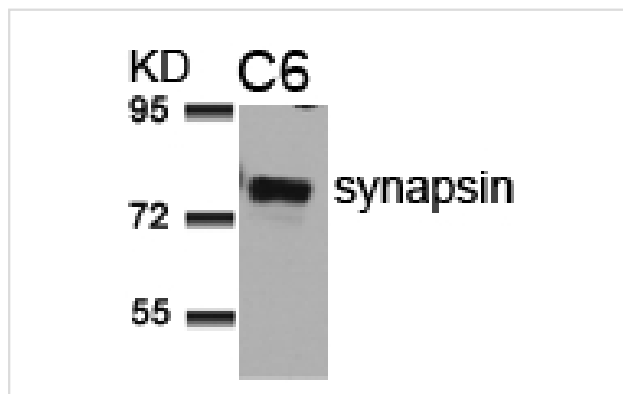
Product Name	synapsin(Ab-9) Antibody
Host Species	Rabbit
Clonality	Polyclonal
Purification	Antibodies were produced by immunizing rabbits with synthetic peptide and KLH conjugates. Antibodies were purified by affinity-chromatography using epitope-specific peptide.
Applications	WB
Species Reactivity	Human Mouse Rat
Specificity	The antibody detects endogenous level of total synapsin protein.
Immunogen Type	Peptide-KLH
Immunogen Description	Peptide sequence around aa.7~11 (R-L-S-D-S) derived from Human SYN1/synapsin.
Target Name	synapsin
Other Names	Syn-1, synapsin I
Accession No.	Swiss-Prot: P17600NCBI Protein: NP_008881.2
Concentration	1.0mg/ml
Formulation	Supplied at 1.0mg/mL in phosphate buffered saline (without Mg ²⁺ and Ca ²⁺), pH 7.4, 150mM NaCl, 0.02% sodium azide and 50% glycerol.
Storage	Store at -20°C for long term preservation (recommended). Store at 4°C for short term use.

Application Details

Predicted MW: 77kd

Western blotting: 1:500~1:1000

Images



Western blot analysis of extracts from C6 cells using synapsin(Ab-9) Antibody #AB21259.

Background

Neuronal phosphoprotein that coats synaptic vesicles, binds to the cytoskeleton, and is believed to function in the regulation of neurotransmitter

release. The complex formed with NOS1 and CAPON proteins is necessary for specific nitric-oxid functions at a presynaptic level

Diviya Sinha, et.al. (2005) Am J Physiol Renal Physiol ; 288: F703 - F713.

Franco Onofri, et.al. (2000) J. Biol. Chem ; 275: 29857.

Dario Bonanomi, et.al. (2005) J. Neurosci; 25: 7299 - 7308.

Hiroshi Tokumitsu, et.al. (2005) J. Biol. Chem ; 280: 35108 - 35118.

Note: This product is for in vitro research use only and is not intended for use in humans or animals.