

ANXA2 (Phospho-Ser26) Antibody

Catalog No: #AB11839



Package Size: #AB11839-1 50ul #AB11839-2 100ul

Orders: [order@abscitech.com](mailto:order@abscitech.com)  
Support: [tech@abscitech.com](mailto:tech@abscitech.com)

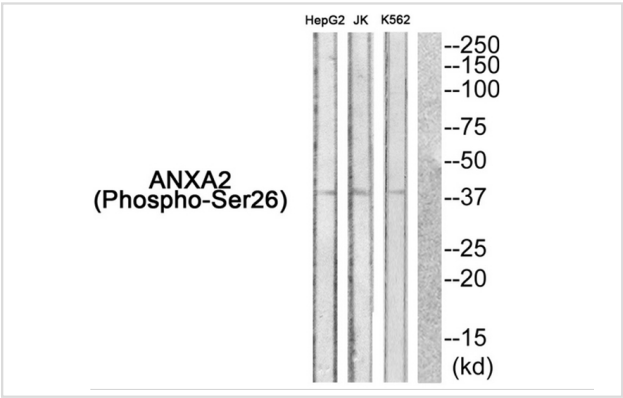
Description

Product Name	ANXA2 (Phospho-Ser26) Antibody
Host Species	Rabbit
Clonality	Polyclonal
Purification	Antibodies were produced by immunizing rabbits with synthetic phosphopeptide and KLH conjugates. Antibodies were purified by affinity-chromatography using epitope-specific phosphopeptide. Non-phospho specific antibodies were removed by chromatography using non-phosphopeptide.
Applications	WB
Species Reactivity	Hu
Specificity	The antibody detects endogenous levels of ANXA2 only when phosphorylated at serine 26.
Immunogen Type	Peptide-KLH
Immunogen Description	Peptide sequence around phosphorylation site of Serine 26 (Y-G-S(p)-V-K) derived from Human ANXA2.
Target Name	ANXA2
Modification	Phospho-Ser26
Other Names	Annexin A2; Annexin II; Annexin-2; CAL1H; Calpactin I heavy chain
Accession No.	Swiss-Prot#: P07355; NCBI Gene#: 302; NCBI Protein#: NP_001002857.1.
SDS-PAGE MW	38kd
Concentration	1.0mg/ml
Formulation	Rabbit IgG in phosphate buffered saline (without Mg2+ and Ca2+), pH 7.4, 150mM NaCl, 0.02% sodium azide and 50% glycerol.
Storage	Store at -20°C/1 year

Application Details

Western blotting: 1:500~1:1000

Images



Western blot analysis of extracts from HepG2 cells JK cells and K562 cells using ANXA2 (Phospho-Ser26) Antibody #AB11839. The lane on the right is treated with the antigen-specific peptide.

## Background

---

Calcium-regulated membrane-binding protein whose affinity for calcium is greatly enhanced by anionic phospholipids. It binds two calcium ions with high affinity. May be involved in heat-stress response.

Huang K.-S., Cell 46:191-199(1986).

Spano F., Gene 95:243-251(1990).

Bechtel S., BMC Genomics 8:399-399(2007).

---

Note: This product is for in vitro research use only and is not intended for use in humans or animals.