

## C-RAF (Phospho-Thr269) Antibody

Catalog No: #AB11752



Package Size: #AB11752-1 50ul #AB11752-2 100ul

Orders: order@abscitech.com

Support: tech@abscitech.com

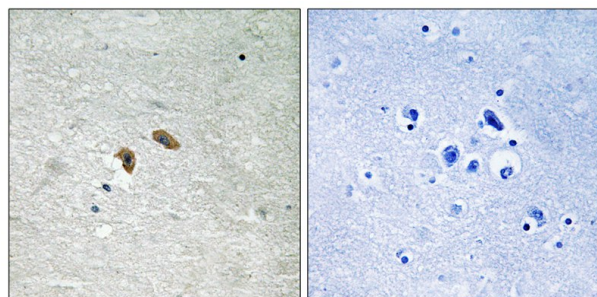
## Description

Product Name	C-RAF (Phospho-Thr269) Antibody
Host Species	Rabbit
Clonality	Polyclonal
Purification	Antibodies were produced by immunizing rabbits with synthetic phosphopeptide and KLH conjugates. Antibodies were purified by affinity-chromatography using epitope-specific phosphopeptide. Non-phospho specific antibodies were removed by chromatography using non-phosphopeptide.
Applications	IHC
Species Reactivity	Hu Ms
Specificity	The antibody detects endogenous levels of C-RAF only when phosphorylated at threonine 269.
Immunogen Type	Peptide-KLH
Immunogen Description	Peptide sequence around phosphorylation site of threonine269 (S-T-T(p)-L-P) derived from Human C-RAF.
Target Name	C-RAF
Modification	Phospho-Thr269
Other Names	C-RAF; C-Raf; CRAF; RAF-1;
Accession No.	Swiss-Prot#: P04049; NCBI Gene#: 5894; NCBI Protein#: NP_002871.1.
SDS-PAGE MW	73kd
Concentration	1.0mg/ml
Formulation	Rabbit IgG in phosphate buffered saline (without Mg2+ and Ca2+), pH 7.4, 150mM NaCl, 0.02% sodium azide and 50% glycerol.
Storage	Store at -20°C/1 year

## Application Details

Immunohistochemistry: 1:50~1:100

## Images



Immunohistochemical analysis of paraffin-embedded human brain tissue using C-RAF (Phospho-Thr269) antibody #AB11752 (left) or the same antibody preincubated with blocking peptide (right).

## Background

Serine/threonine-protein kinase that acts as a regulatory link between the membrane-associated Ras GTPases and the MAPK/ERK cascade, and this critical regulatory link functions as a switch determining cell fate decisions including proliferation, differentiation, apoptosis, survival and oncogenic transformation. RAF1 activation initiates a mitogen-activated protein kinase (MAPK) cascade that comprises a sequential phosphorylation of the dual-specific MAPK kinases (MAP2K1/MEK1 and MAP2K2/MEK2) and the extracellular signal-regulated kinases (MAPK3/ERK1 and MAPK1/ERK2). The phosphorylated form of RAF1 (on residues Ser-338 and Ser-339, by PAK1) phosphorylates BAD/Bcl2-antagonist of cell death at 'Ser-75'. Phosphorylates adenylyl cyclases: ADCY2, ADCY5 and ADCY6, resulting in their activation. Phosphorylates PPP1R12A resulting in inhibition of the phosphatase activity. Phosphorylates TNNT2/cardiac muscle troponin T. Can promote NF- $\kappa$ B activation and inhibit signal transducers involved in motility (ROCK2), apoptosis (MAP3K5/ASK1 and STK3/MST2), proliferation and angiogenesis (RB1). Can protect cells from apoptosis also by translocating to the mitochondria where it binds BCL2 and displaces BAD/Bcl2-antagonist of cell death. Regulates Rho signaling and migration, and is required for normal wound healing. Plays a role in the oncogenic transformation of epithelial cells via repression of the TJ protein, occludin (OCLN) by inducing the up-regulation of a transcriptional repressor SNAI2/SLUG, which induces down-regulation of OCLN. Restricts caspase activation in response to selected stimuli, notably Fas stimulation, pathogen-mediated macrophage apoptosis, and erythroid differentiation.

The MGC Project Team; Genome Res. 14:2121-2127(2004).

Olsen J.V., Cell 127:635-648(2006).

Mott H.R., Proc. Natl. Acad. Sci. U.S.A. 93:8312-8317(1996).

**Note:** This product is for in vitro research use only and is not intended for use in humans or animals.