

EGFR(Ab-678) Antibody

Catalog No: #AB21193



Package Size: #AB21193-1 50ul #AB21193-2 100ul #AB21193-4 25ul

Orders: order@abscitech.comSupport: tech@abscitech.com

Description

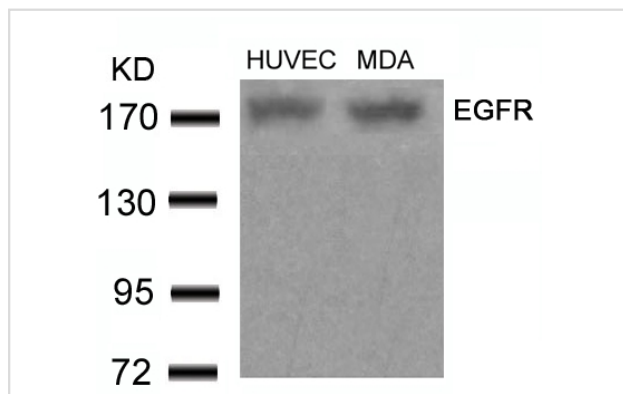
Product Name	EGFR(Ab-678) Antibody
Host Species	Rabbit
Clonality	Polyclonal
Purification	Antibodies were produced by immunizing rabbits with synthetic peptide and KLH conjugates. Antibodies were purified by affinity-chromatography using epitope-specific peptide.
Applications	WB
Species Reactivity	Hu Ms Rt
Specificity	The antibody detects endogenous level of total EGFR protein.
Immunogen Type	Peptide-KLH
Immunogen Description	Peptide sequence around aa.676~680 (K-R-T-L-R) derived from Human EGFR.
Target Name	EGFR
Other Names	Receptor tyrosine-protein kinase ErbB-1; ERBB1;
Accession No.	Swiss-Prot: P00533NCBI Protein: NP_005219.2
Concentration	1.0mg/ml
Formulation	Supplied at 1.0mg/mL in phosphate buffered saline (without Mg ²⁺ and Ca ²⁺), pH 7.4, 150mM NaCl, 0.02% sodium azide and 50% glycerol.
Storage	Store at -20°C for long term preservation (recommended). Store at 4°C for short term use.

Application Details

Predicted MW: 175kd

Western blotting: 1:500~1:1000

Images



Western blot analysis of extracts from HUVEC and MDA cells using EGFR(Ab-678) Antibody #AB21193.

Background

Receptor for EGF, but also for other members of the EGF family, as TGF- α , amphiregulin, betacellulin, heparin-binding EGF-like growth factor, GP30

and vaccinia virus growth factor. Is involved in the control of cell growth and differentia

Doherty JK, et al. (1999) Proc Natl Acad Sci U S A; 96(19): 10869-10874

Wu TT, et al. (1998) Mol Biol Cell; 9(7): 1661-1674

O

Note: This product is for in vitro research use only and is not intended for use in humans or animals.