

# GRB2 Monoclonal Antibody

Catalog No: #AB27180



Package Size: #AB27180-1 50ul #AB27180-2 100ul #AB27180-4 25ul

Orders: [order@abscitech.com](mailto:order@abscitech.com)  
Support: [tech@abscitech.com](mailto:tech@abscitech.com)

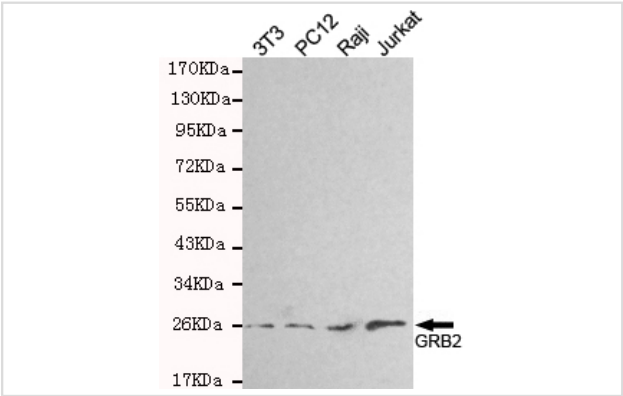
## Description

Product Name	GRB2 Monoclonal Antibody
Host Species	Mouse
Clonality	Monoclonal
Clone No.	3B2-G2-E5
Isotype	IgG1
Applications	WB
Species Reactivity	Hu Rt Ms Mk
Specificity	This antibody detects endogenous levels of GRB2 and does not cross-react with related proteins.
Immunogen Type	Recombinant Protein
Immunogen Description	Purified recombinant human GRB2 protein fragments expressed in E.coli.
Target Name	GRB2
Other Names	Abundant SRC homology; Adapter protein GRB2; ASH; Ash protein; EGFRBP GRB2; Epidermal growth factor receptor binding protein; Epidermal growth factor receptor binding protein GRB2; GRB 2; GRB2 adapter protein; Grb2; GRB2_HUMAN; Grb3 3;
Accession No.	Uniprot: P62993 Gene ID: 2885
SDS-PAGE MW	25kd
Formulation	Ascites
Storage	store at -20Λ C

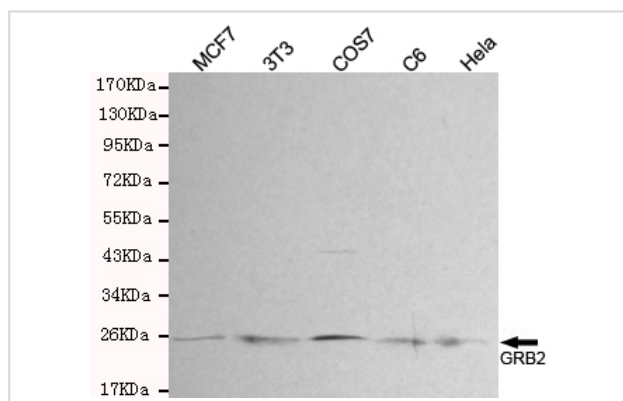
## Application Details

Western blotting: 1:500

## Images



Western blot detection of GRB2 in Jurkat,Raji,PC-12&3T3 cell lysates and using GRB2 antibody(1:500 diluted).Predicted band size: 25KDa Observed band size: 25KDa



Western blot detection of GRB2 in MCF7, 3T3, COS7, C6 and HeLa cell lysates and using GRB2 antibody (1:300 diluted). Predicted band size: 25KDa. Observed band size: 25KDa.

## Background

Adapter protein that provides a critical link between cell surface growth factor receptors and the Ras signaling pathway. Isoform 2 does not bind to phosphorylated epidermal growth factor receptor (EGFR) but inhibits EGF-induced transactivation of a RAS-responsive element. Isoform 2 acts as a dominant negative protein over GRB2 and by suppressing proliferative signals, may trigger active programmed cell death.

Note: This product is for in vitro research use only and is not intended for use in humans or animals.