

Mouse IgG2b Isotype Control, FITC Conjugated mAb

Catalog No: #AB28279



Package Size: #AB28279-1 50 Tests

Orders: order@abscitech.comSupport: tech@abscitech.com

Description

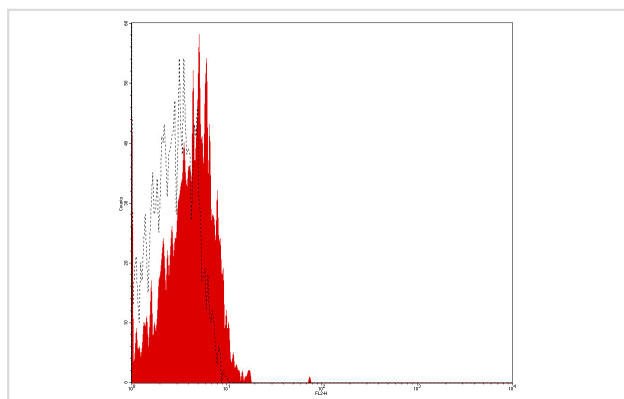
Product Name	Mouse IgG2b Isotype Control, FITC Conjugated mAb
Host Species	Mouse
Clonality	Monoclonal
Clone No.	4A2B5
Isotype	IgG2b
Applications	FC
Species Reactivity	Hu
Conjugates	FITC
Target Name	IgG2b
Formulation	Phosphate-buffered solution, pH 7.4, containing 0.09% sodium azide and 0.2% (w/v) BSA
Storage	Store at 4°C. DO NOT FREEZE. LIGHT SENSITIVE MATERIAL.

Application Details

Vol.per.Test: 10 &mu;l/Test

Notice: This reagent has been pre-diluted for use at recommended volume per test in flow cytometry analysis. Typically add 10ul of this reagent to 100μl of experimental sample with 1 X 10⁶ cells per test. Please refer to the detailed protocol when you perform a test.

Images



Human peripheral blood lymphocytes analyzed with FITC
Mouse IgG2b Isotype Control mAb

Background

This antibody can be used as a mouse IgG2b isotype control in flow cytometry and other applications.

Note: This product is for in vitro research use only and is not intended for use in humans or animals.