

PAK1/PAK2/PAK3(Ab-423/402/421) Antibody

Catalog No: #AB21169



Package Size: #AB21169-1 50ul #AB21169-2 100ul #AB21169-4 25ul

Orders: order@abscitech.com

Support: tech@abscitech.com

Description

| | |
|-----------------------|---|
| Product Name | PAK1/PAK2/PAK3(Ab-423/402/421) Antibody |
| Host Species | Rabbit |
| Clonality | Polyclonal |
| Purification | Antibodies were produced by immunizing rabbits with synthetic peptide and KLH conjugates. Antibodies were purified by affinity-chromatography using epitope-specific peptide. |
| Applications | WB IHC IF |
| Species Reactivity | Hu Ms Rt |
| Specificity | The antibody detects endogenous level of total PAK1/PAK2/PAK3 protein. |
| Immunogen Type | Peptide-KLH |
| Immunogen Description | Peptide sequence around aa.421~425/400~404/419~423 (R-S-T-M-V) derived from Human PAK1/PAK2/PAK3. |
| Target Name | PAK1/PAK2/PAK3 |
| Other Names | p21-activated kinase 1; PAK-1; p65-PAK; Alpha-PAK; |
| Accession No. | Swiss-Prot: Q13153/Q13177/O75914NCBI Protein: NP_001122092.1 NP_002568.2 NP_001121638.1 |
| Concentration | 1.0mg/ml |
| Formulation | Supplied at 1.0mg/mL in phosphate buffered saline (without Mg ²⁺ and Ca ²⁺), pH 7.4, 150mM NaCl, 0.02% sodium azide and 50% glycerol. |
| Storage | Store at -20°C for long term preservation (recommended). Store at 4°C for short term use. |

Application Details

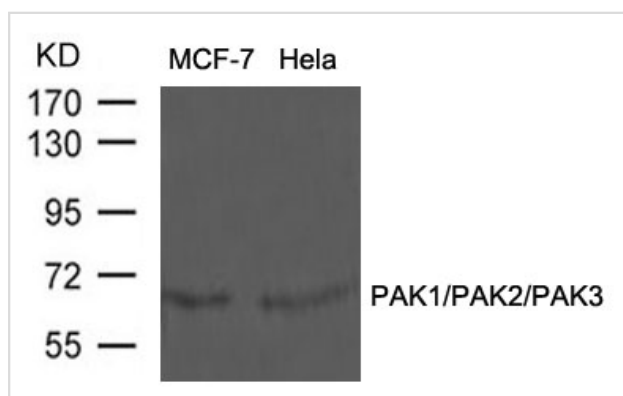
Predicted MW: 61-67 (PAK2) 68-74 (PAK1/3)kd

Western blotting: 1:500~1:1000

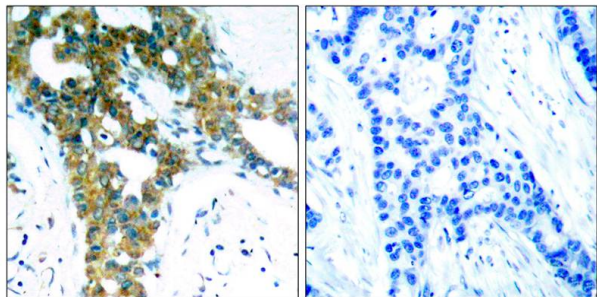
Immunohistochemistry: 1:50~1:100

Immunofluorescence: 1:100~1:200

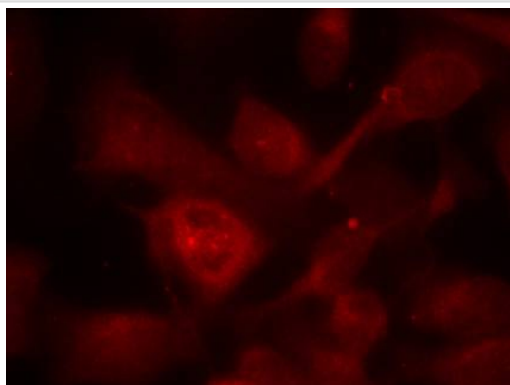
Images



Western blot analysis of extracts from MCF-7 and HeLa cells using PAK1/PAK2/PAK3(Ab-423/402/421) Antibody #AB21169.



Immunohistochemical analysis of paraffin-embedded human breast carcinoma tissue using PAK1/PAK2/PAK3(Ab-423/402/421) Antibody #AB21169(left) or the same antibody preincubated with blocking peptide(right).



Immunofluorescence staining of methanol-fixed HeLa cells using PAK1/PAK2/PAK3(Ab-423/402/421) Antibody #AB21169.

Background

The activated kinase acts on a variety of targets. Likely to be the GTPase effector that links the Rho-related GTPases to the JNK MAP kinase pathway. Activated by CDC42 and RAC1. Involved in dissolution of stress fibers and reorganization of focal complexes. Involved in regulation of microtubule biogenesis through phosphorylation of TBCB. Activity is inhibited in cells undergoing apoptosis, potentially due to binding of CDC2L1 and CDC2L2.

Parsons M, et al. (2005) Mol Cell Biol ; 25:1680-1695.

Jung JH, et al. (2005) J Biol Chem; 280:40025-40031.

Lampugnani MG, et al. (2002) Mol Biol Cell ; 13: 1175-1189

Wang RA, et al. (2002) EMBO J; 21: 5437 - 5447.

Note: This product is for in vitro research use only and is not intended for use in humans or animals.