

NMDAR2B(Ab-1474) Antibody

Catalog No: #AB21158



Package Size: #AB21158-1 50ul #AB21158-2 100ul #AB21158-4 25ul

Orders: order@abscitech.comSupport: tech@abscitech.com

Description

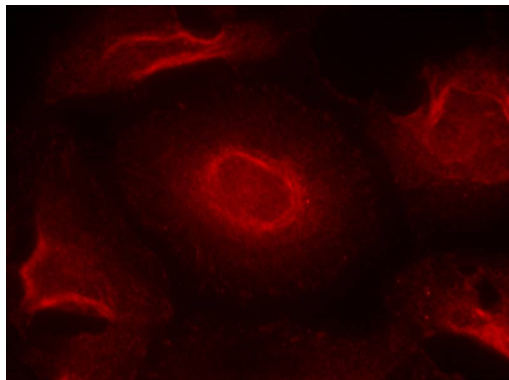
Product Name	NMDAR2B(Ab-1474) Antibody
Host Species	Rabbit
Clonality	Polyclonal
Purification	Antibodies were produced by immunizing rabbits with synthetic peptide and KLH conjugates. Antibodies were purified by affinity-chromatography using epitope-specific peptide.
Applications	IF
Species Reactivity	Hu Ms Rt
Specificity	The antibody detects endogenous level of total NMDAR2B protein.
Immunogen Type	Peptide-KLH
Immunogen Description	Peptide sequence around aa.1472~1476 (H-V-Y-E-K) derived from Human NMDAR2B.
Target Name	NMDAR2B
Other Names	GRIN2B; NMDE2; NME2; NR2B; NR3
Accession No.	Swiss-Prot: Q13224NCBI Protein: NP_000825.2
Concentration	1.0mg/ml
Formulation	Supplied at 1.0mg/mL in phosphate buffered saline (without Mg ²⁺ and Ca ²⁺), pH 7.4, 150mM NaCl, 0.02% sodium azide and 50% glycerol.
Storage	Store at -20°C for long term preservation (recommended). Store at 4°C for short term use.

Application Details

Predicted MW: 190kd

Immunofluorescence: 1:100~1:200

Images



Immunofluorescence staining of methanol-fixed HeLa cells using NMDAR2B(Ab-1474) antibody #AB21158.

Background

NMDA receptor subtype of glutamate-gated ion channels with high calcium permeability and voltage-dependent sensitivity to magnesium. Mediated by

glycine.

Babb TL et al.Epilepsy Res. 2005 Mar-Apr;64(1-2):23-30

Chazot PL. Curr Med Chem. 2004 Feb;11(3):389-96

Kakegawa W, et al.Eur J Neurosci. 2003 Feb;17(4):887-91

Note: This product is for in vitro research use only and is not intended for use in humans or animals.