

CDK6(phospho-Tyr13) Antibody

Catalog No: #AB11542



Package Size: #AB11542-1 50ul #AB11542-2 100ul #AB11542-4 25ul

Orders: order@abscitech.com
Support: tech@abscitech.com

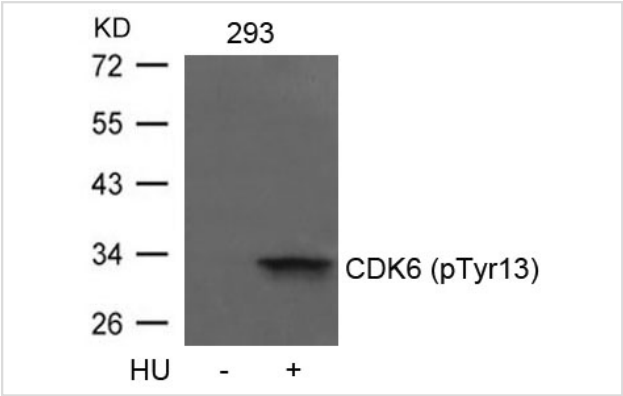
Description

Product Name	CDK6(phospho-Tyr13) Antibody
Host Species	Rabbit
Clonality	Polyclonal
Purification	Antibodies were produced by immunizing rabbits with synthetic phosphopeptide and KLH conjugates. Antibodies were purified by affinity-chromatography using epitope-specific phosphopeptide. Non-phospho specific antibodies were removed by chromatography using non-phosphopeptide.
Applications	WB IHC IF
Species Reactivity	Hu Ms Rt
Specificity	The antibody detects endogenous level of CDK6 only when phosphorylated at tyrosine 13.
Immunogen Type	Peptide-KLH
Immunogen Description	Peptide sequence around phosphorylation site of tyrosine 13 (Q-Q-Y(p)-E-C) derived from Human CDK6.
Target Name	CDK6
Modification	Phospho-Tyr13
Other Names	Serine/threonine-protein kinase PLSTIRE
Accession No.	Swiss-Prot: Q00534NCBI Protein: NP_001138778.1
Concentration	1.0mg/ml
Formulation	Supplied at 1.0mg/mL in phosphate buffered saline (without Mg2+ and Ca2+), pH 7.4, 150mM NaCl, 0.02% sodium azide and 50% glycerol.
Storage	Store at -20°C for long term preservation (recommended). Store at 4°C for short term use.

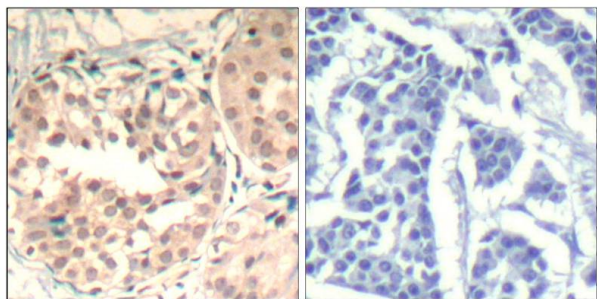
Application Details

Predicted MW: 36kd
Western blotting: 1:500~1:1000
Immunohistochemistry: 1:50~1:100
Immunofluorescence: 1:100~1:200

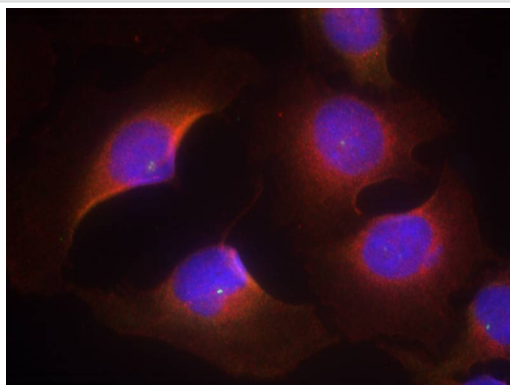
Images



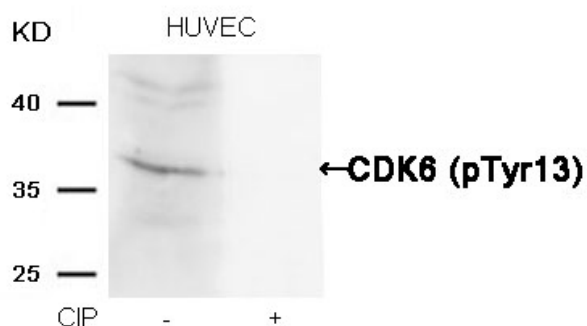
Western blot analysis of extracts from 293 cells untreated or treated with HU using CDK6(phospho-Tyr13) Antibody #AB11542.



Immunohistochemical analysis of paraffin-embedded human breast carcinoma tissue using CDK6(Phospho-Tyr13) Antibody #AB11542(left) or the same antibody preincubated with blocking peptide(right).



Immunofluorescence staining of methanol-fixed HeLa cells using CDK6(phospho-Tyr13) Antibody #AB11542.



Western blot analysis of extracts from HUVEC cells, treated with calf intestinal phosphatase (CIP), using CDK6 (phospho-Tyr13) Antibody #AB11542.

Background

Probably involved in the control of the cell cycle. Interacts with D-type G1 cyclins.

Note: This product is for in vitro research use only and is not intended for use in humans or animals.