

LATS1 (Phospho-Thr1079) Antibody

Catalog No: #AB13032



Package Size: #13032-1 50ul #13032-2 100ul

Orders: order@abscitech.com
Support: tech@abscitech.com

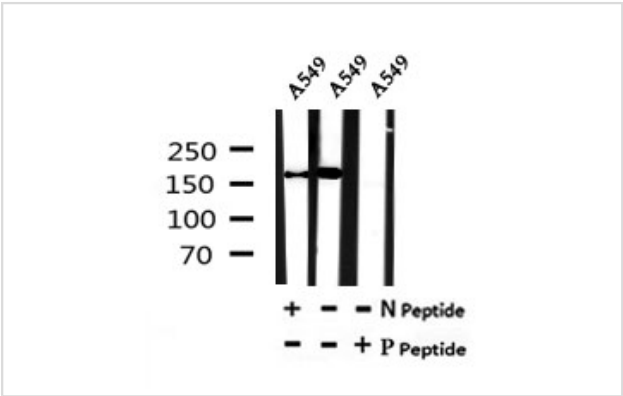
Description

Product Name	LATS1 (Phospho-Thr1079) Antibody
Host Species	Rabbit
Clonality	Polyclonal
Purification	The antibody is from purified rabbit serum by affinity purification via sequential chromatography on phospho- and non-phospho-peptide affinity columns.
Applications	WB
Species Reactivity	Hu, Ms
Specificity	Phospho-LATS1 (Phospho-Thr1079) Antibody detects endogenous levels of LATS1 only when phosphorylated at Thr1079
Immunogen Description	A synthesized peptide derived from human LATS1 around the phosphorylation site of Thr1079
Target Name	LATS1
Other Names	h-warts; Large tumor suppressor homolog 1; LATS large tumor suppressor homolog 1; LATS1; LATS1_HUMAN; Serine threonine protein kinase LATS1; Serine/threonine-protein kinase LATS1; WARTS; WARTS protein kinase; wts;
Accession No.	Swiss-Prot#:O95835NCBI Gene ID:9113
Calculated MW	160
Concentration	1mg/ml
Formulation	Rabbit IgG in phosphate buffered saline , pH 7.4, 150mM NaCl, 0.02% sodium azide and 50% glycerol.
Storage	Store at -20 °C.Stable for 12 months from date of receipt

Application Details

WB: 1:500-1:2000

Images



Western blot analysis of Phospho-LATS1 (Thr1079) in lysates of A549 , using Phospho-LATS1 (Thr1079) Antibody(AB13032).

Note: This product is for in vitro research use only and is not intended for use in humans or animals.