

LLGL2 (Phospho-Tyr499) Antibody

Catalog No: #12857



Package Size: #12857-1 50ul #12857-2 100ul

Orders: [order@abscitech.com](mailto:order@abscitech.com)  
Support: [tech@abscitech.com](mailto:tech@abscitech.com)

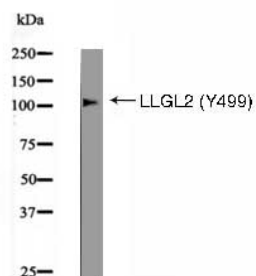
Description

Product Name	LLGL2 (Phospho-Tyr499) Antibody
Brief Description	Rabbit Polyclonal
Host Species	Rabbit
Clonality	Polyclonal
Applications	WB
Species Reactivity	Hu Ms Rt
Specificity	Phospho-LLGL2 (Y499) Antibody detects endogenous levels of LLGL2 only when phosphorylated at Y499
Immunogen Type	Peptide-KLH
Immunogen Description	A synthesized peptide derived from human LLGL2 (Phospho-Tyr499)
Other Names	HGL antibody Human giant larvae homolog antibody L2GL2 antibody L2GL2_HUMAN antibody Lethal 2 giant larvae protein homolog 2 antibody Lethal giant larvae homolog 2 antibody Lethal(2) giant larvae protein homolog 2 antibody LGL2 antibody LLGL2 antibody
Accession No.	Swiss-Prot#:Q6P1M3 NCBI Gene ID3993
Calculated MW	113 kDa.
Concentration	1.0mg mL
Formulation	Rabbit IgG in phosphate buffered saline (without Mg2+ and Ca2+) pH 7.4 150mM NaCl 0.02% sodium azide and 50% glycerol.
Storage	Store at -20°C

Application Details

WB dilution:1:1000

Images



Western blot analysis LLGL2 (Phospho-Tyr499) using HeLa whole cell lysates

## Product Description

Part of a complex with GPSM2, LGN, PRKCI, aPKC and PARD6B, Par-6, which may ensure the correct organization and orientation of bipolar spindles for normal cell division. This complex plays roles in the initial phase of the establishment of epithelial cell polarity.

Note: This product is for in vitro research use only and is not intended for use in humans or animals.