

DLEU7 Polyclonal Antibody

Catalog No: #AB46864



Package Size: #AB46864-1 50ul #AB46864-2 100ul

Orders: order@abscitech.comSupport: tech@abscitech.com

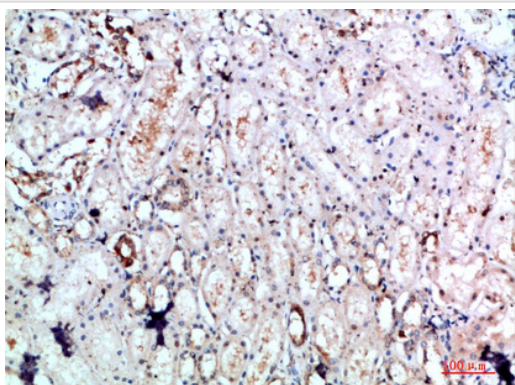
Description

| | |
|-----------------------|---|
| Product Name | DLEU7 Polyclonal Antibody |
| Host Species | Rabbit |
| Clonality | Polyclonal |
| Purification | The antibody was affinity-purified from rabbit serum by affinity-chromatography using specific immunogen. |
| Applications | IHC |
| Species Reactivity | Hu |
| Specificity | The antibody detects endogenous DLEU7 |
| Immunogen Type | protein |
| Immunogen Description | Synthetic peptide from human protein at AA range: 51-100 |
| Target Name | DLEU7 |
| Other Names | Leukemia-associated protein 7 (Deleted in lymphocytic leukemia 7) |
| Accession No. | Swiss-Prot:Q6UYE1NCBI Gene ID:220107 |
| Concentration | 1 mg/ml |
| Formulation | PBS, pH 7.4, containing 0.02% sodium azide as Preservative and 50% Glycerol. |
| Storage | Store at -20°C |

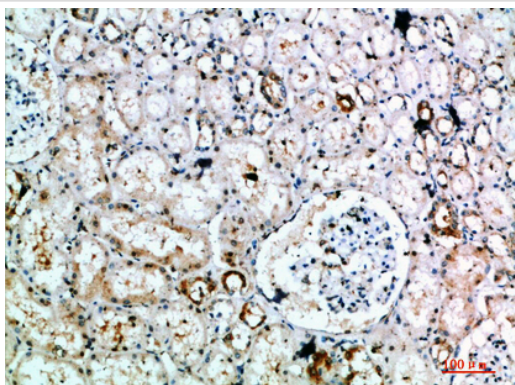
Application Details

Immunohistochemistry: IHC 1:50-300

Images



Immunohistochemical analysis of paraffin-embedded human-kidney, antibody was diluted at 1:200



Immunohistochemical analysis of paraffin-embedded human-kidney, antibody was diluted at 1:200

Note: This product is for in vitro research use only and is not intended for use in humans or animals.