

CD11b Polyclonal Antibody

Catalog No: #AB46806



Package Size: #AB46806-1 50ul #AB46806-2 100ul

Orders: order@abscitech.com
Support: tech@abscitech.com

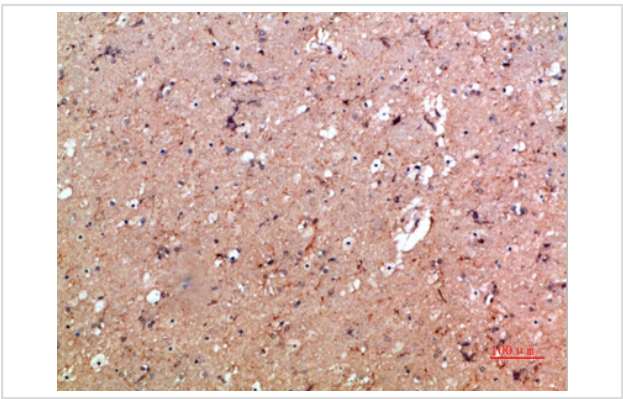
Description

| | |
|-----------------------|--|
| Product Name | CD11b Polyclonal Antibody |
| Host Species | Rabbit |
| Clonality | Polyclonal |
| Purification | The antibody was affinity-purified from rabbit serum by affinity-chromatography using specific immunogen. |
| Applications | IHC |
| Species Reactivity | Hu |
| Specificity | The antibody detects endogenous CD11b |
| Immunogen Type | protein |
| Immunogen Description | Synthetic peptide from human protein at AA range: 280-360 |
| Target Name | CD11b |
| Other Names | Integrin alpha-M (CD11 antigen-like family member B) (CR-3 alpha chain) (Cell surface glycoprotein MAC-1 subunit alpha) (Leukocyte adhesion receptor MO1) (Neutrophil adherence receptor) (CD antigen CD11b) |
| Accession No. | Swiss-Prot:P11215NCBI Gene ID:3684 |
| Concentration | 1 mg/ml |
| Formulation | PBS, pH 7.4, containing 0.02% sodium azide as Preservative and 50% Glycerol. |
| Storage | Store at -20°C |

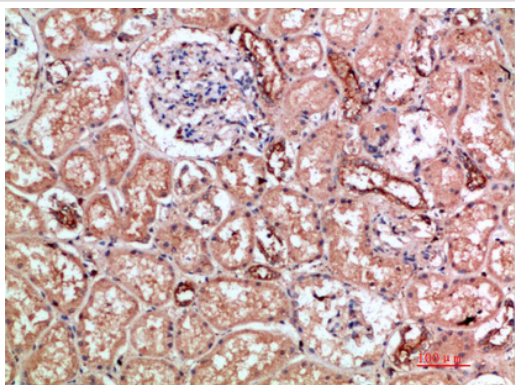
Application Details

Immunohistochemistry: IHC 1:50-300

Images



Immunohistochemical analysis of paraffin-embedded human-brain, antibody was diluted at 1:200



Immunohistochemical analysis of paraffin-embedded human-kidney, antibody was diluted at 1:200

Note: This product is for in vitro research use only and is not intended for use in humans or animals.