

## MLL Polyclonal Antibody

Catalog No: #AB46802



Package Size: #AB46802-1 50ul #AB46802-2 100ul

Orders: [order@abscitech.com](mailto:order@abscitech.com)Support: [tech@abscitech.com](mailto:tech@abscitech.com)

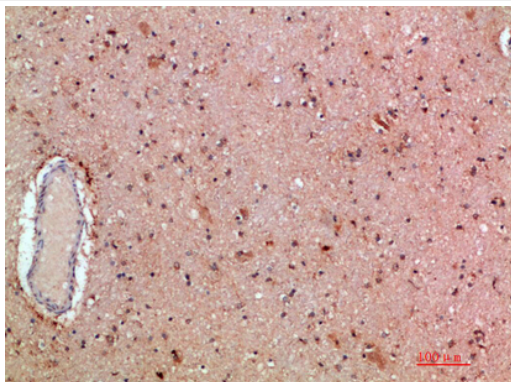
## Description

Product Name	MLL Polyclonal Antibody
Host Species	Rabbit
Clonality	Polyclonal
Purification	The antibody was affinity-purified from rabbit serum by affinity-chromatography using specific immunogen.
Applications	IHC
Species Reactivity	Hu Ms Rt
Specificity	The antibody detects endogenous MLL
Immunogen Type	protein
Immunogen Description	Synthetic peptide from human protein at AA range: 3850-3900
Target Name	MLL
Other Names	Histone-lysine N-methyltransferase MLL (EC 2.1.1.43) (ALL-1) (CXXC-type zinc finger protein 7) (Lysine N-methyltransferase 2A) (KMT2A) (Trithorax-like protein) (Zinc finger protein HRX) [Cleaved into: MLL cleavage product N320 (N-terminal cleavage product of 320 kDa) (p320); MLL cleavage product C18
Accession No.	Swiss-Prot:Q03164NCBI Gene ID:4297
Concentration	1 mg/ml
Formulation	PBS, pH 7.4, containing 0.02% sodium azide as Preservative and 50% Glycerol.
Storage	Store at -20°C

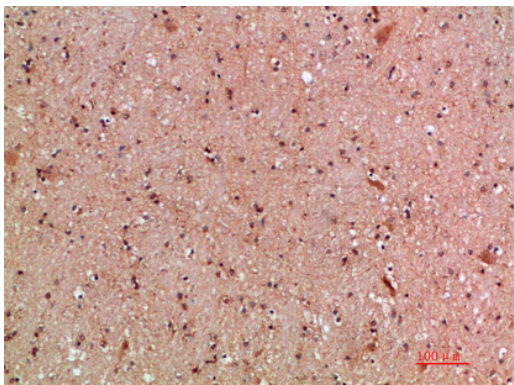
## Application Details

Immunohistochemistry: IHC 1:50-300

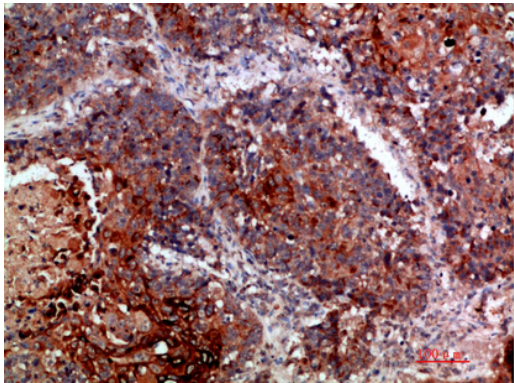
## Images



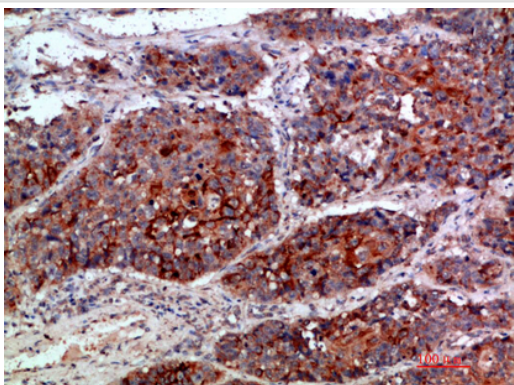
Immunohistochemical analysis of paraffin-embedded human-brain, antibody was diluted at 1:200



Immunohistochemical analysis of paraffin-embedded human-brain, antibody was diluted at 1:200



Immunohistochemical analysis of paraffin-embedded human-lung-cancer, antibody was diluted at 1:200



Immunohistochemical analysis of paraffin-embedded human-lung-cancer, antibody was diluted at 1:200

---

Note: This product is for in vitro research use only and is not intended for use in humans or animals.