

GRO $\alpha$  Polyclonal Antibody

Catalog No: #AB46801



Package Size: #AB46801-1 50ul #AB46801-2 100ul

Orders: [order@abscitech.com](mailto:order@abscitech.com)Support: [tech@abscitech.com](mailto:tech@abscitech.com)

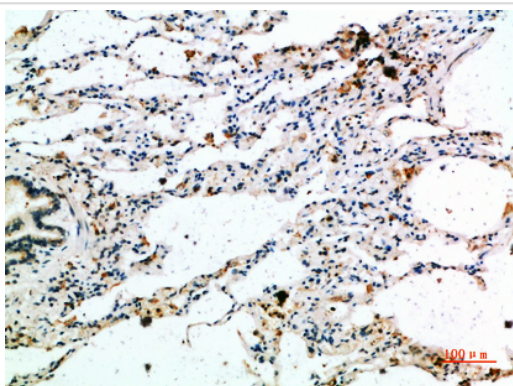
## Description

Product Name	GRO $\alpha$ Polyclonal Antibody
Host Species	Rabbit
Clonality	Polyclonal
Purification	The antibody was affinity-purified from rabbit serum by affinity-chromatography using specific immunogen.
Applications	IHC
Species Reactivity	Hu
Specificity	The antibody detects endogenous GRO $\alpha$
Immunogen Type	protein
Immunogen Description	Synthetic peptide from human protein at AA range: 70-107
Target Name	GRO $\alpha$
Other Names	Growth-regulated alpha protein (C-X-C motif chemokine 1) (GRO-alpha(1-73)) (Melanoma growth stimulatory activity) (MGSA) (Neutrophil-activating protein 3) (NAP-3) [Cleaved into: GRO-alpha(4-73); GRO-alpha(5-73); GRO-alpha(6-73)]
Accession No.	Swiss-Prot:P09341NCBI Gene ID:2919
Concentration	1 mg/ml
Formulation	PBS, pH 7.4, containing 0.02% sodium azide as Preservative and 50% Glycerol.
Storage	Store at -20°C

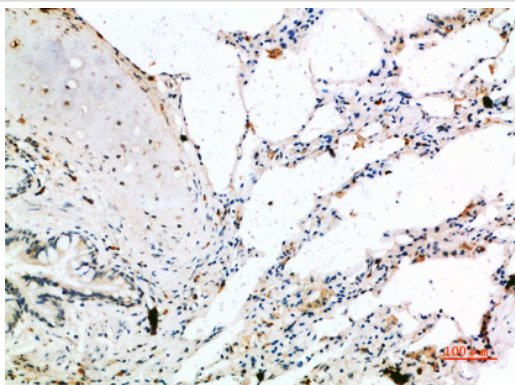
## Application Details

Immunohistochemistry: IHC 1:50-300

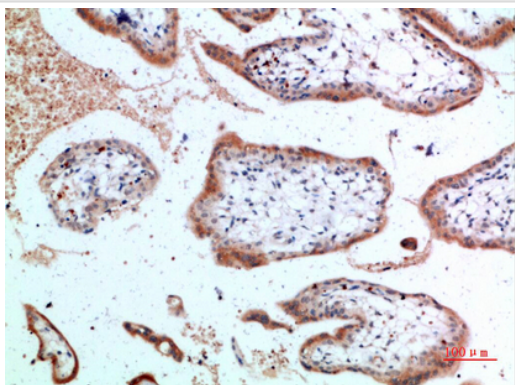
## Images



Immunohistochemical analysis of paraffin-embedded human-lung(), antibody was diluted at 1:200



Immunohistochemical analysis of paraffin-embedded human-lung, antibody was diluted at 1:200



Immunohistochemical analysis of paraffin-embedded human-placenta, antibody was diluted at 1:200

---

Note: This product is for in vitro research use only and is not intended for use in humans or animals.