

## IL-12B p40 Polyclonal Antibody

Catalog No: #AB46781



Package Size: #AB46781-1 50ul #AB46781-2 100ul

Orders: [order@abscitech.com](mailto:order@abscitech.com)Support: [tech@abscitech.com](mailto:tech@abscitech.com)

## Description

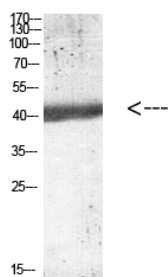
|                       |  |
|-----------------------|--|
| Product Name          | IL-12B p40 Polyclonal Antibody   |
| Host Species          | Rabbit   |
| Clonality             | Polyclonal   |
| Purification          | The antibody was affinity-purified from rabbit serum by affinity-chromatography using specific immunogen.  |
| Applications          | WB IHC   |
| Species Reactivity    | Hu   |
| Specificity           | The antibody detects endogenous IL-12B p40   |
| Immunogen Type        | protein  |
| Immunogen Description | Synthetic peptide from human protein at AA range: 241-290  |
| Target Name           | IL-12B p40   |
| Other Names           | Interleukin-12 subunit beta (IL-12B) (Cytotoxic lymphocyte maturation factor 40 kDa subunit) (CLMF p40) (IL-12 subunit p40) (NK cell stimulatory factor chain 2) (NKSF2) |
| Accession No.         | Swiss-Prot:P29460NCBI Gene ID:3593   |
| Calculated MW         | 40kd   |
| Concentration         | 1 mg/ml  |
| Formulation           | PBS, pH 7.4, containing 0.02% sodium azide as Preservative and 50% Glycerol.   |
| Storage               | Store at -20°C   |

## Application Details

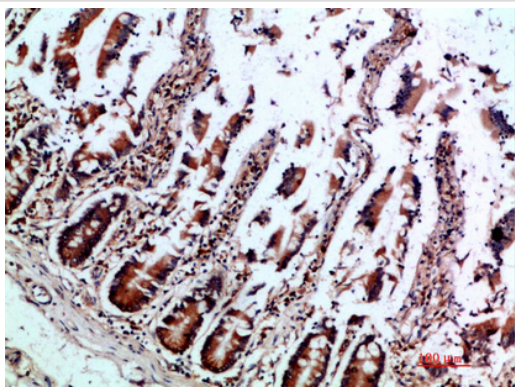
Western blotting: 1:500-1:2000

Immunohistochemistry: IHC 1:50-300

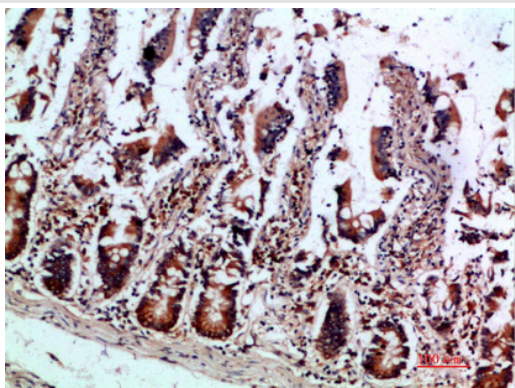
## Images



Western blot analysis of mouse-kidney lysate, antibody was diluted at 1000. Secondary antibody was diluted at 1:20000



Immunohistochemical analysis of paraffin-embedded human-colon, antibody was diluted at 1:200



Immunohistochemical analysis of paraffin-embedded human-colon, antibody was diluted at 1:200

---

Note: This product is for in vitro research use only and is not intended for use in humans or animals.