

## MIB1 Polyclonal Antibody

Catalog No: #AB46750



Package Size: #AB46750-1 50ul #AB46750-2 100ul

Orders: [order@abscitech.com](mailto:order@abscitech.com)Support: [tech@abscitech.com](mailto:tech@abscitech.com)

## Description

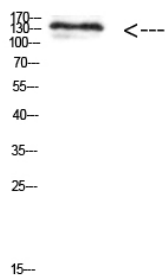
Product Name	MIB1 Polyclonal Antibody
Host Species	Rabbit
Clonality	Polyclonal
Purification	The antibody was affinity-purified from rabbit serum by affinity-chromatography using specific immunogen.
Applications	WB IHC
Species Reactivity	Hu Ms Rt
Specificity	The antibody detects endogenous MIB1 protein
Immunogen Type	protein
Immunogen Description	Synthetic peptide from human protein at AA range: 901-950
Target Name	MIB1
Other Names	MIB1 DIP1 KIAA1323 ZZANK2
Accession No.	Swiss-Prot:Q86YT6NCBI Gene ID:57534
Calculated MW	130kd
Concentration	1 mg/ml
Formulation	PBS, pH 7.4, containing 0.02% sodium azide as Preservative and 50% Glycerol.
Storage	Store at -20°C

## Application Details

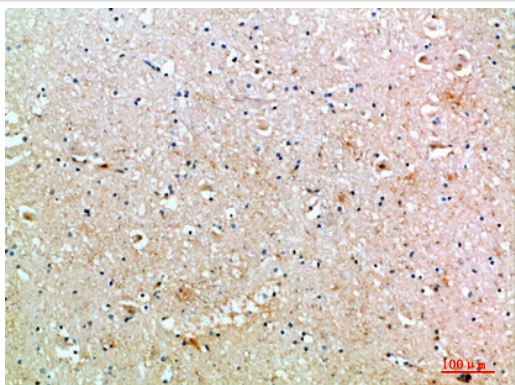
Western blotting: 1:500-1:10000

Immunohistochemistry: IHC: 1:100-1:300

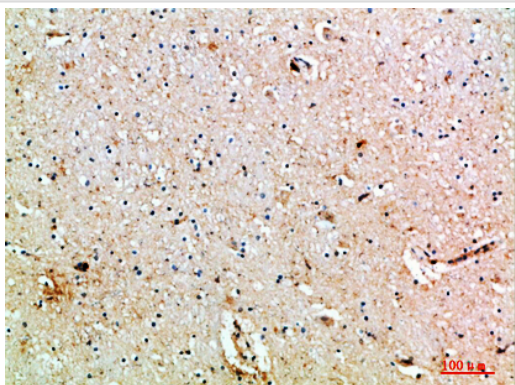
## Images



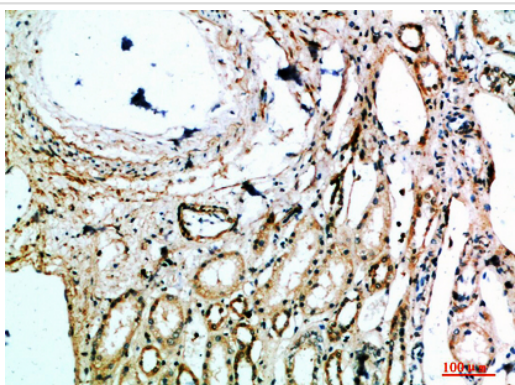
Western Blot analysis of 293t cells using Antibody diluted at 1000. Secondary antibody was diluted at 1:20000



Immunohistochemical analysis of paraffin-embedded human-brain, antibody was diluted at 1:200



Immunohistochemical analysis of paraffin-embedded human-brain, antibody was diluted at 1:200



Immunohistochemical analysis of paraffin-embedded human-kidney, antibody was diluted at 1:200

Note: This product is for in vitro research use only and is not intended for use in humans or animals.