

Imp3 Polyclonal Antibody

Catalog No: #AB46748



Package Size: #AB46748-1 50ul #AB46748-2 100ul

Orders: order@abscitech.com
Support: tech@abscitech.com

Description

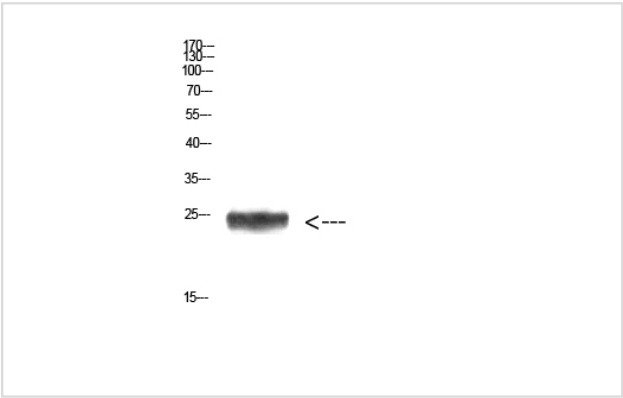
Product Name	Imp3 Polyclonal Antibody
Host Species	Rabbit
Clonality	Polyclonal
Purification	The antibody was affinity-purified from rabbit serum by affinity-chromatography using specific immunogen.
Applications	WB IHC
Species Reactivity	Hu Ms Rt
Specificity	The antibody detects endogenous Imp3 protein
Immunogen Type	protein
Immunogen Description	Synthetic peptide from human protein at AA range: 135-184
Target Name	Imp3
Other Names	IMP3 C15orf12 MRPS4
Accession No.	Swiss-Prot:Q9NV31NCBI Gene ID:55272
Calculated MW	25kd
Concentration	1 mg/ml
Formulation	PBS, pH 7.4, containing 0.02% sodium azide as Preservative and 50% Glycerol.
Storage	Store at -20°C

Application Details

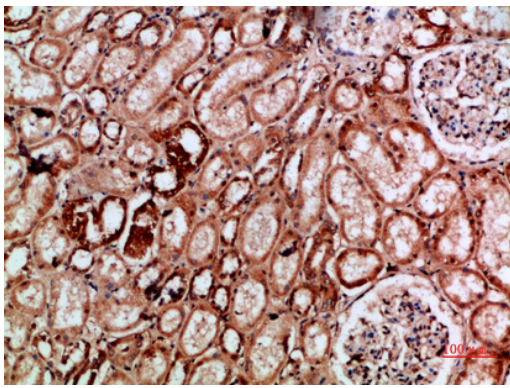
Western blotting: 1:500-1:10000

Immunohistochemistry: IHC: 1:100-1:300

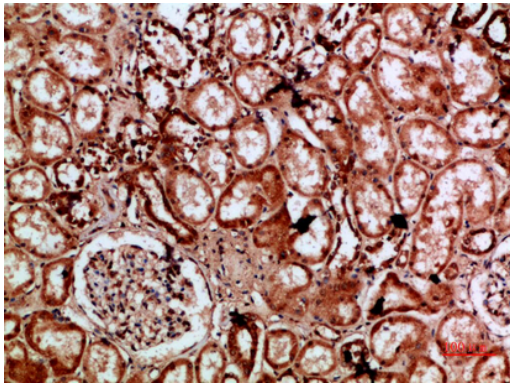
Images



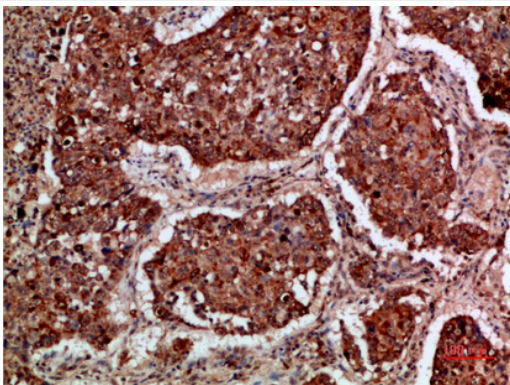
Western Blot analysis of HEPG2 cells using Antibody diluted at 1000. Secondary antibody was diluted at 1:20000



Immunohistochemical analysis of paraffin-embedded human-kidney, antibody was diluted at 1:200



Immunohistochemical analysis of paraffin-embedded human-kidney, antibody was diluted at 1:200



Immunohistochemical analysis of paraffin-embedded human-lung-cancer, antibody was diluted at 1:200

Note: This product is for in vitro research use only and is not intended for use in humans or animals.