

# NLRX1 Polyclonal Antibody

Catalog No: #AB46745



Package Size: #AB46745-1 50ul #AB46745-2 100ul

Orders: [order@abscitech.com](mailto:order@abscitech.com)  
Support: [tech@abscitech.com](mailto:tech@abscitech.com)

## Description

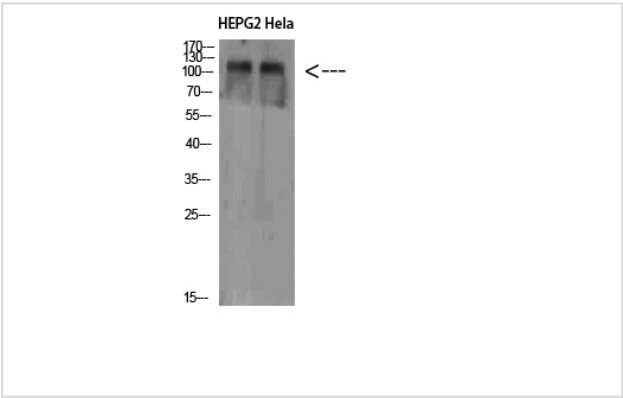
Product Name	NLRX1 Polyclonal Antibody
Host Species	Rabbit
Clonality	Polyclonal
Purification	The antibody was affinity-purified from rabbit antiserum by affinity-chromatography using epitope-specific immunogen.
Applications	WB IHC
Species Reactivity	Hu Ms Rt
Specificity	NLRX1 Polyclonal Antibody detects endogenous levels of NLRX1
Immunogen Type	protein
Immunogen Description	Synthesized peptide derived from NLRX1 at AA range: 581-630
Target Name	NLRX1
Other Names	NLR family member X1 (Caterpillar protein 11.3) (CLR11.3) (Nucleotide-binding oligomerization domain protein 26) (Nucleotide-binding oligomerization domain protein 5) (Nucleotide-binding oligomerization domain protein 9)
Accession No.	Swiss-Prot:Q86UT6NCBI Gene ID:79671
Calculated MW	108kd
Concentration	1 mg/ml
Formulation	Liquid in PBS containing 50% glycerol, 0.5% BSA and 0.02% sodium azide.
Storage	Store at -20°C

## Application Details

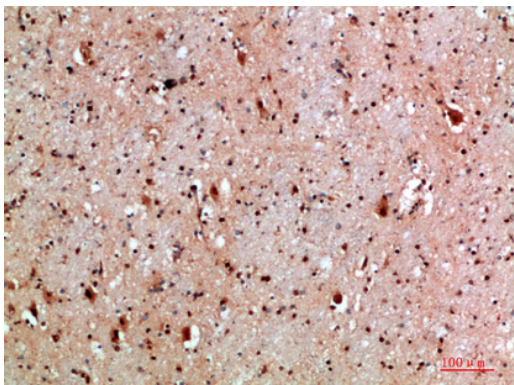
Western blotting: 1:500-1:2000

Immunohistochemistry: IHC: 1:100-1:300

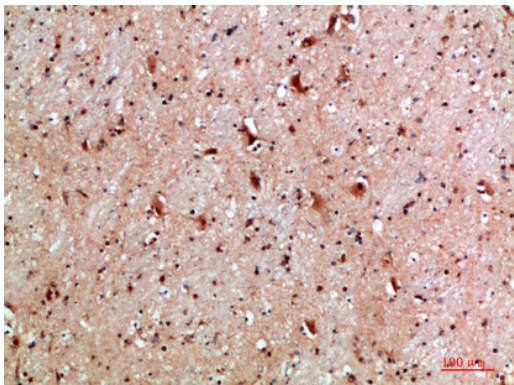
## Images



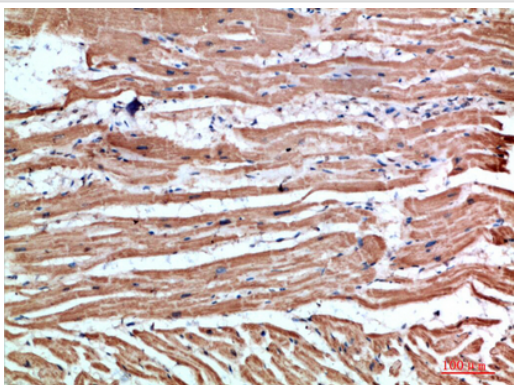
Western Blot analysis of HEPG2 cells using NLRX1 Polyclonal Antibody diluted at 1:1000. Secondary antibody was diluted at 1:20000



Immunohistochemical analysis of paraffin-embedded human-brain, antibody was diluted at 1:200



Immunohistochemical analysis of paraffin-embedded human-brain, antibody was diluted at 1:200



Immunohistochemical analysis of paraffin-embedded human-heart, antibody was diluted at 1:200

---

Note: This product is for in vitro research use only and is not intended for use in humans or animals.