

# ACSS1 (Acetyl-K642) Polyclonal Antibody

Catalog No: #ABHW182



Package Size: #ABHW182-1 50ul #ABHW182-2 100ul

Orders: [order@abscitech.com](mailto:order@abscitech.com)

Support: [tech@abscitech.com](mailto:tech@abscitech.com)

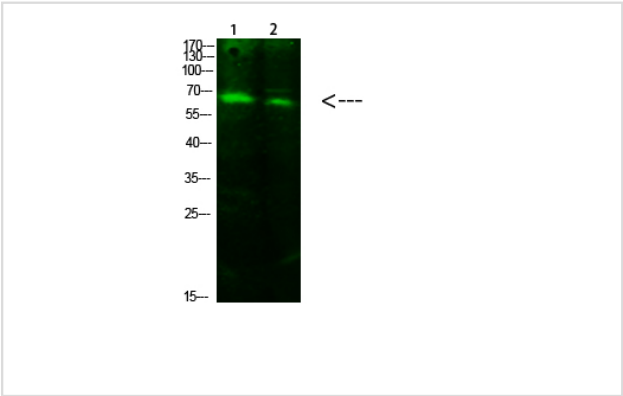
## Description

Product Name	ACSS1 (Acetyl-K642) Polyclonal Antibody
Host Species	Rabbit
Clonality	Polyclonal
Purification	The antibody was affinity-purified from rabbit antiserum by affinity-chromatography using epitope-specific immunogen.
Applications	WB
Species Reactivity	Hu Ms Rt
Specificity	This antibody detects endogenous levels of ACSS1 (Acetyl-K642), It doesn't react with total protein.
Immunogen Type	protein
Immunogen Description	Synthesized Acetyl peptide derived from human ACSS1. at AA range: K642
Target Name	ACSS1 (Acetyl-K642)
Other Names	Acetyl-coenzyme A synthetase 2-like, mitochondrial (EC 6.2.1.1) (Acetate--CoA ligase 2) (Acetyl-CoA synthetase 2) (AceCS2) (Acyl-CoA synthetase short-chain family member 1)
Accession No.	Swiss-Prot:Q9NUB1NCBI Gene ID:84532
Calculated MW	70kd
Concentration	1 mg/ml
Formulation	Liquid in PBS containing 50% glycerol, 0.5% BSA and 0.02% sodium azide.
Storage	Store at -20°C

## Application Details

Western blotting: 1:500-1:2000

## Images



Western Blot analysis of 1,293T 2, hela cells using primary antibody diluted at 1:1000(4°C overnight). Secondary antibody:Goat Anti-rabbit IgG IRDye 800( diluted at 1:5000, 25°C, 1 hour)

---

Note: This product is for in vitro research use only and is not intended for use in humans or animals.