

## INCENP (Phospho-Thr59) Antibody

Catalog No: #AB12762



Package Size: #AB12762-1 50ul #AB12762-2 100ul

Orders: [order@abscitech.com](mailto:order@abscitech.com)Support: [tech@abscitech.com](mailto:tech@abscitech.com)

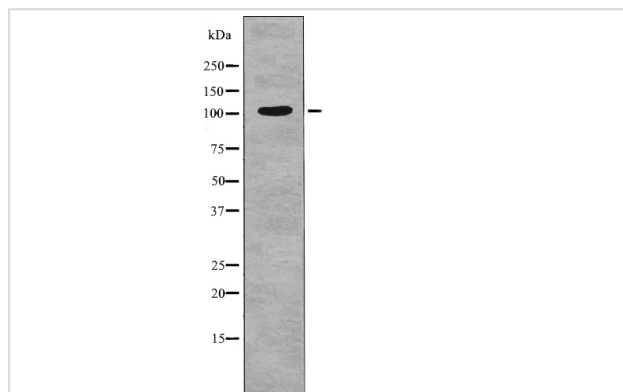
## Description

|                       |   |
|-----------------------|---|
| Product Name          | INCENP (Phospho-Thr59) Antibody   |
| Host Species          | Rabbit  |
| Clonality             | Polyclonal  |
| Purification          | Antibodies were produced by immunizing rabbits with synthetic phosphopeptide and KLH conjugates.<br>Antibodies were purified by affinity-chromatography using epitope-specific phosphopeptide. Non-phospho specific antibodies were removed by chromatography using non-phosphopeptide. |
| Applications          | WB  |
| Species Reactivity    | Hu Ms Rt  |
| Specificity           | INCENP (Phospho-Thr59) Antibody detects endogenous levels of INCENP only when phosphorylated at Thr59   |
| Immunogen Type        | Peptide   |
| Immunogen Description | A synthesized peptide derived from human INCENP (Phospho-Thr59)   |
| Target Name           | INCENP  |
| Modification          | Phospho-Thr59   |
| Other Names           | INCENP, Chromosomal passenger protein, Inner centromere protein   |
| Accession No.         | Swiss-Prot#: Q9NQS7NCBI Gene ID: 3619   |
| Target Species        | human   |
| Calculated MW         | 105kd   |
| Concentration         | 1.0mg/ml  |
| Formulation           | Rabbit IgG in phosphate buffered saline (without Mg2+ and Ca2+), pH 7.4, 150mM NaCl, 0.02% sodium azide and 50% glycerol.   |
| Storage               | Store at -20°C  |

## Application Details

Western blotting: 1:1000

## Images



Western blot analysis INCENP (Phospho-Thr59) using heatshock treated HT29 whole cell lysates

---

Note: This product is for in vitro research use only and is not intended for use in humans or animals.