

FANCD2 (Phospho-Thr691) Antibody

Catalog No: #AB12754



Package Size: #AB12754-1 50ul #AB12754-2 100ul

Orders: order@abscitech.comSupport: tech@abscitech.com

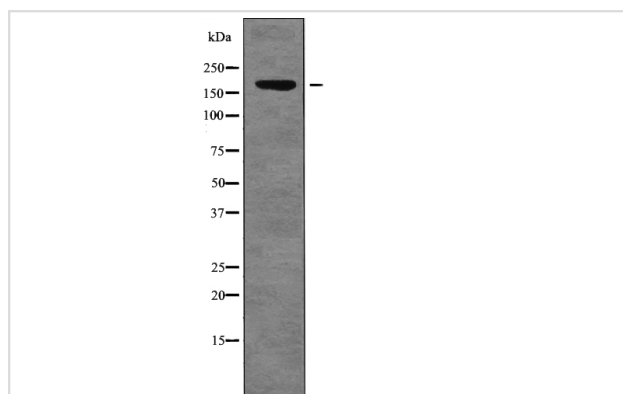
Description

Product Name	FANCD2 (Phospho-Thr691) Antibody
Host Species	Rabbit
Clonality	Polyclonal
Purification	Antibodies were produced by immunizing rabbits with synthetic phosphopeptide and KLH conjugates. Antibodies were purified by affinity-chromatography using epitope-specific phosphopeptide. Non-phospho specific antibodies were removed by chromatography using non-phosphopeptide.
Applications	WB
Species Reactivity	Hu
Specificity	FANCD2 (Phospho-Thr691) Antibody detects endogenous levels of FANCD2 only when phosphorylated at Thr691
Immunogen Type	Peptide
Immunogen Description	A synthesized peptide derived from human FANCD2 (Phospho-Thr691)
Target Name	FANCD2
Modification	Phospho-Thr691
Other Names	FANCD2, FA-D2, FAD, FACD, FA4, FAD2, FANCD, Protein FACD2
Accession No.	Swiss-Prot#: Q9BXW9NCBI Gene ID: 2177
Target Species	human
Calculated MW	166kd
Concentration	1.0mg/ml
Formulation	Rabbit IgG in phosphate buffered saline (without Mg ²⁺ and Ca ²⁺), pH 7.4, 150mM NaCl, 0.02% sodium azide and 50% glycerol.
Storage	Store at -20°C

Application Details

Western blotting: 1:1000

Images



Western blot analysis FANCD2 (Phospho-Thr691) using
Mouse braintissue lysates

Note: This product is for in vitro research use only and is not intended for use in humans or animals.