

AP-2mu (Phospho-Thr156) Antibody

Catalog No: #AB12741



Package Size: #AB12741-1 50ul #AB12741-2 100ul

Orders: order@abscitech.comSupport: tech@abscitech.com

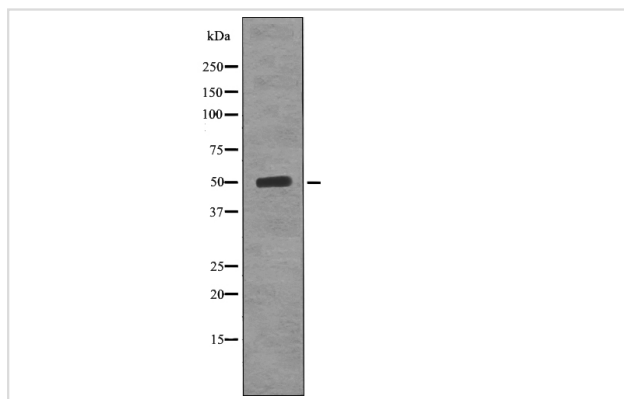
Description

Product Name	AP-2mu (Phospho-Thr156) Antibody
Host Species	Rabbit
Clonality	Polyclonal
Purification	Antibodies were produced by immunizing rabbits with synthetic phosphopeptide and KLH conjugates. Antibodies were purified by affinity-chromatography using epitope-specific phosphopeptide. Non-phospho specific antibodies were removed by chromatography using non-phosphopeptide.
Applications	WB
Species Reactivity	Hu Ms Rt
Specificity	AP-2mu (Phospho-Thr156) Antibody detects endogenous levels of AP-2mu only when phosphorylated at Thr156
Immunogen Type	Peptide
Immunogen Description	A synthesized peptide derived from human AP-2mu (Phospho-Thr156)
Target Name	AP-2mu
Modification	Phospho-Thr156
Other Names	AP2M1, Adaptin-mu2, AP-2 complex subunit mu, AP-2 mu 2 chain, AP-2 mu chain, AP50, CLAPM1, Mu2, KIAA0109, HA2 50 kDa subunit
Accession No.	Swiss-Prot#: Q96CW1NCBI Gene ID: 1173
Target Species	human
Calculated MW	49kd
Concentration	1.0mg/ml
Formulation	Rabbit IgG in phosphate buffered saline (without Mg2+ and Ca2+), pH 7.4, 150mM NaCl, 0.02% sodium azide and 50% glycerol.
Storage	Store at -20°C

Application Details

Western blotting: 1:1000

Images



Western blot analysis AP-2mu (Phospho-Thr156) using HepG2 whole cell lysates

Note: This product is for in vitro research use only and is not intended for use in humans or animals.