

## EPHA1 (Phospho-Tyr599) Antibody

Catalog No: #AB12709



Package Size: #AB12709-1 50ul #AB12709-2 100ul

Orders: [order@abscitech.com](mailto:order@abscitech.com)Support: [tech@abscitech.com](mailto:tech@abscitech.com)

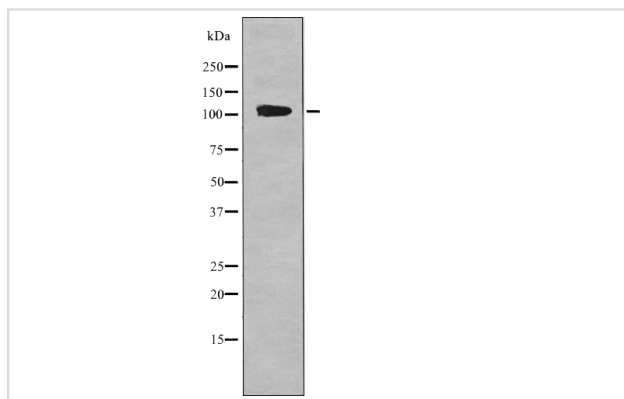
## Description

Product Name	EPHA1 (Phospho-Tyr599) Antibody
Host Species	Rabbit
Clonality	Polyclonal
Purification	Antibodies were produced by immunizing rabbits with synthetic phosphopeptide and KLH conjugates. Antibodies were purified by affinity-chromatography using epitope-specific phosphopeptide. Non-phospho specific antibodies were removed by chromatography using non-phosphopeptide.
Applications	WB
Species Reactivity	Hu Ms
Specificity	EPHA1 (Phospho-Tyr599) Antibody detects endogenous levels of EPHA1 only when phosphorylated at Tyr599
Immunogen Type	Peptide
Immunogen Description	A synthesized peptide derived from human EPHA1 (Phospho-Tyr599)
Target Name	EPHA1
Modification	Phospho-Tyr599
Other Names	EPHA1, EPH receptor A1, Ephrin type-A receptor 1, EPHT, ESK, EPH tyrosine kinase 1, HEpha1, Oncogene EPH, Soluble EPHA1 variant 1, Soluble EPHA1 variant 2, EPH tyrosine kinase, EPHT1
Accession No.	Swiss-Prot#: P21709NCBI Gene ID: 2041
Target Species	human
Calculated MW	108kd
Concentration	1.0mg/ml
Formulation	Rabbit IgG in phosphate buffered saline (without Mg2+ and Ca2+), pH 7.4, 150mM NaCl, 0.02% sodium azide and 50% glycerol.
Storage	Store at -20°C

## Application Details

Western blotting: 1:1000

## Images



Western blot analysis EPHA1 (Phospho-Tyr599) using IL-4 treated HeLa whole cell lysates

Note: This product is for in vitro research use only and is not intended for use in humans or animals.