

Chk2 (Phospho-Ser379) Antibody

Catalog No: #AB12704



Package Size: #AB12704-1 50ul #AB12704-2 100ul

Orders: order@abscitech.comSupport: tech@abscitech.com

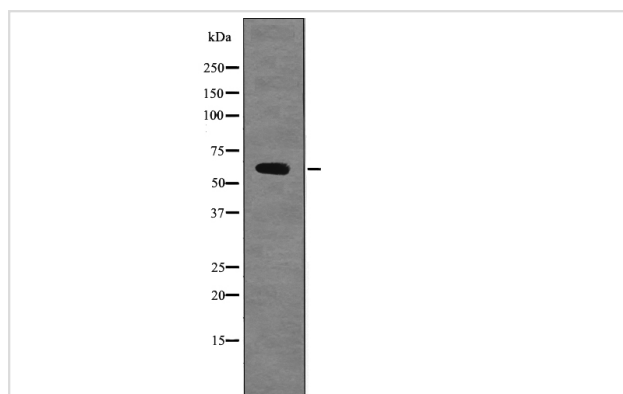
Description

Product Name	Chk2 (Phospho-Ser379) Antibody
Host Species	Rabbit
Clonality	Polyclonal
Purification	Antibodies were produced by immunizing rabbits with synthetic phosphopeptide and KLH conjugates. Antibodies were purified by affinity-chromatography using epitope-specific phosphopeptide. Non-phospho specific antibodies were removed by chromatography using non-phosphopeptide.
Applications	WB
Species Reactivity	Hu Ms Rt
Specificity	Chk2 (Phospho-Ser379) Antibody detects endogenous levels of Chk2 only when phosphorylated at Ser379
Immunogen Type	Peptide
Immunogen Description	A synthesized peptide derived from human Chk2 (Phospho-Ser379)
Target Name	Chk2
Modification	Phospho-Ser379
Other Names	CHEK2, BA444G7, Cds1 homolog, Checkpoint kinase 2, Checkpoint-like protein CHK2, CHK2 checkpoint homolog, CHK2, HCds1, LFS2, RAD53, Rad53 homolog, HCHK2, HuCds1, PP1425
Accession No.	Swiss-Prot#: O96017NCBI Gene ID: 11200
Target Species	human
Calculated MW	62kd
Concentration	1.0mg/ml
Formulation	Rabbit IgG in phosphate buffered saline (without Mg ²⁺ and Ca ²⁺), pH 7.4, 150mM NaCl, 0.02% sodium azide and 50% glycerol.
Storage	Store at -20°C

Application Details

Western blotting: 1:1000

Images



Western blot analysis Chk2 (Phospho-Ser379) using EGF treated HuvEc whole cell lysates

Note: This product is for in vitro research use only and is not intended for use in humans or animals.