

USP28 (Phospho-Ser714) Antibody

Catalog No: #AB12653



Package Size: #AB12653-1 50ul #AB12653-2 100ul

Orders: order@abscitech.comSupport: tech@abscitech.com

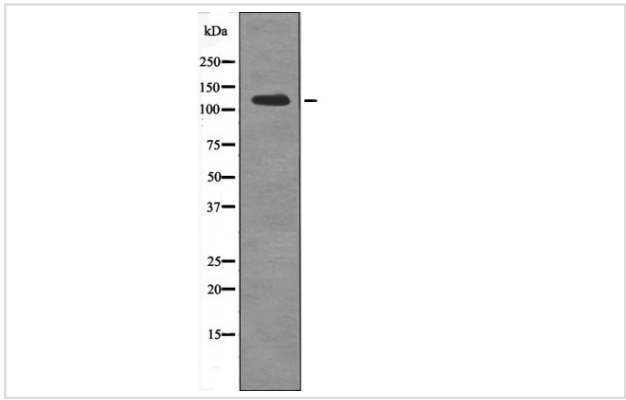
Description

Product Name	USP28 (Phospho-Ser714) Antibody
Host Species	Rabbit
Clonality	Polyclonal
Purification	Antibodies were produced by immunizing rabbits with synthetic phosphopeptide and KLH conjugates. Antibodies were purified by affinity-chromatography using epitope-specific phosphopeptide. Non-phospho specific antibodies were removed by chromatography using non-phosphopeptide.
Applications	WB
Species Reactivity	Hu
Specificity	USP28 (Phospho-Ser714) Antibody detects endogenous levels of USP28 only when phosphorylated at Ser714
Immunogen Type	Peptide
Immunogen Description	A synthesized peptide derived from human USP28 (Phospho-Ser714)
Target Name	USP28
Modification	Phospho-Ser714
Other Names	USP28, Deubiquitinating enzyme 28, KIAA1515, Ubiquitin specific protease 28, Ubiquitin thioesterase 28, Ubiquitin thiolesterase 28
Accession No.	Swiss-Prot#: Q96RU2NCBI Gene ID: 57646
Target Species	human
Calculated MW	122kd
Concentration	1.0mg/ml
Formulation	Rabbit IgG in phosphate buffered saline (without Mg2+ and Ca2+), pH 7.4, 150mM NaCl, 0.02% sodium azide and 50% glycerol.
Storage	Store at -20°C

Application Details

Western blotting: 1:1000

Images



Western blot analysis USP28 (Phospho-Ser714) using UV treated COS7 whole cell lysates

Note: This product is for in vitro research use only and is not intended for use in humans or animals.