

CUTL1 (Phospho-Ser1215) Antibody

Catalog No: #AB12592



Package Size: #AB12592-1 50ul #AB12592-2 100ul

Orders: order@abscitech.com
Support: tech@abscitech.com

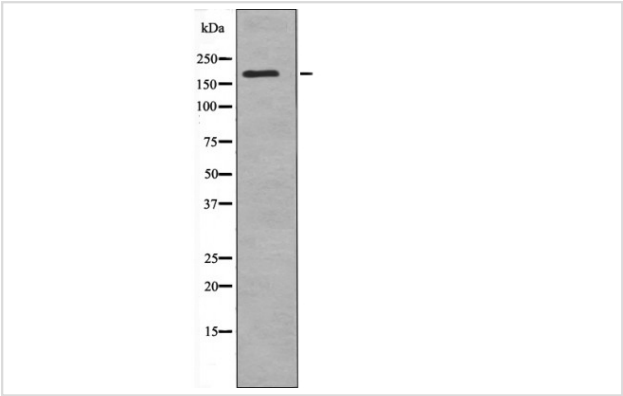
Description

Product Name	CUTL1 (Phospho-Ser1215) Antibody
Host Species	Rabbit
Clonality	Polyclonal
Purification	Antibodies were produced by immunizing rabbits with synthetic phosphopeptide and KLH conjugates. Antibodies were purified by affinity-chromatography using epitope-specific phosphopeptide. Non-phospho specific antibodies were removed by chromatography using non-phosphopeptide.
Applications	WB
Species Reactivity	Hu Ms Rt
Specificity	CUTL1 (Phospho-Ser1215) Antibody detects endogenous levels of CUTL1 only when phosphorylated at Ser1215
Immunogen Type	Peptide
Immunogen Description	A synthesized peptide derived from human CUTL1 (Phospho-Ser1215)
Target Name	CUTL1
Modification	Phospho-Ser1215
Other Names	CUTL1 (Phospho-Ser1215) Antibody
Accession No.	Swiss-Prot#: P39880NCBI Gene ID: 1523
Target Species	human
Calculated MW	164kd
Concentration	1.0mg/ml
Formulation	Rabbit IgG in phosphate buffered saline (without Mg2+ and Ca2+), pH 7.4, 150mM NaCl, 0.02% sodium azide and 50% glycerol.
Storage	Store at -20°C

Application Details

Western blotting: 1:1000

Images



Western blot analysis CUTL1 (Phospho-Ser1215) using nocodazole treated COS7 whole cell lysates

Note: This product is for in vitro research use only and is not intended for use in humans or animals.