

# HP-1γ Mouse Monoclonal Antibody(2F5)

Catalog No: #AB44243



Package Size: #AB44243-1 50ul #AB44243-2 100ul

Orders: [order@abscitech.com](mailto:order@abscitech.com)  
Support: [tech@abscitech.com](mailto:tech@abscitech.com)

## Description

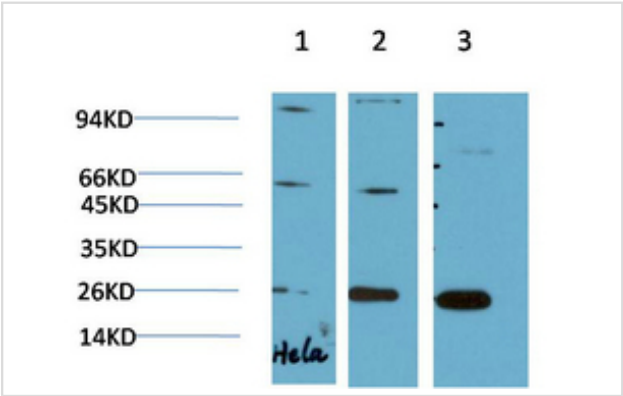
Product Name	HP-1γ Mouse Monoclonal Antibody(2F5)
Host Species	Mouse
Clonality	Monoclonal
Clone No.	2F5
Isotype	IgG1
Applications	WB IHC
Species Reactivity	Hu Ms Rt
Specificity	The antibody detects endogenous HP-1γ protein
Immunogen Type	Recombinant protein
Immunogen Description	Recombinant Protein of HP-1γ
Target Name	HP-1γ
Other Names	Chromobox protein homolog 3 (HECH) (Heterochromatin protein 1 homolog gamma) (HP1 gamma) (Modifier 2 protein)
Calculated MW	24kd
Concentration	1mg/ml
Formulation	PBS, pH 7.4, containing 0.02% sodium azide as Preservative and 50% Glycerol.
Storage	Store at -20°C/1 year

## Application Details

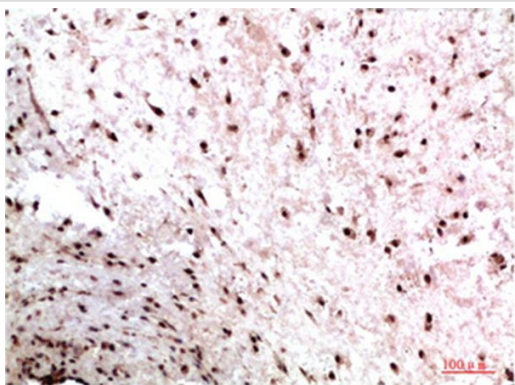
Western blotting: 1:500-1:2000

Immunohistochemistry: 1:50-1:2000

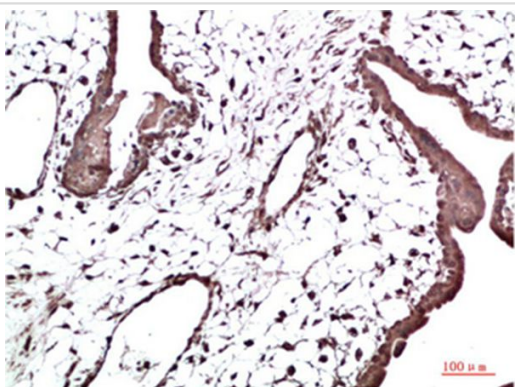
## Images



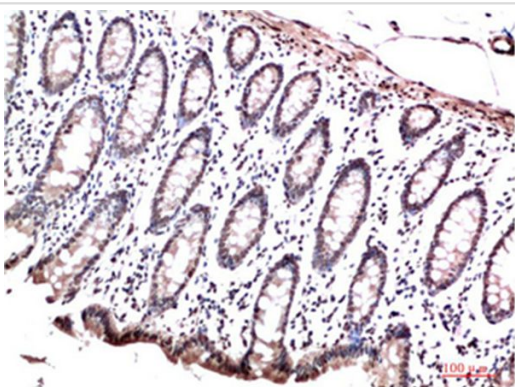
Western blot analysis of 1) Hela Cell Lysate, 2)3T3 Cell Lysate, 3) PC12 Cell Lysate using HP-1γ Mouse mAb diluted at 1:1000.



Immunohistochemical analysis of paraffin-embedded Human Colon Carcinoma Tissue using HP-1 $\gamma$  Mouse mAb diluted at 1:200



Immunohistochemical analysis of paraffin-embedded Human Placenta Tissue using HP-1 $\gamma$  Mouse mAb diluted at 1:200



Immunohistochemical analysis of paraffin-embedded Human Colon Carcinoma Tissue using HP-1 $\gamma$  Mouse mAb diluted at 1:200

---

Note: This product is for in vitro research use only and is not intended for use in humans or animals.