

Phosphoserine Monoclonal Antibody(5B12)

Catalog No: #AB12828



Package Size: #AB12828-1 50ul #AB12828-2 100ul

Orders: order@abscitech.com

Support: tech@abscitech.com

Description

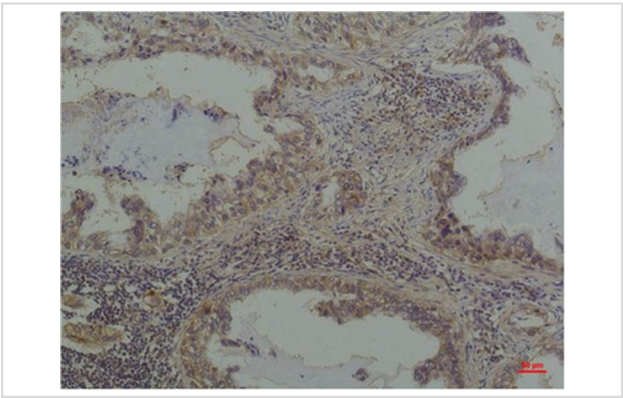
| | |
|-----------------------|--|
| Product Name | Phosphoserine Monoclonal Antibody(5B12) |
| Host Species | Mouse |
| Clonality | Monoclonal |
| Clone No. | 5B12 |
| Isotype | IgG1 |
| Applications | WB IHC |
| Species Reactivity | All |
| Specificity | The antibody detects endogenous Phosphoserine protein. |
| Immunogen Type | Recombinant Protein |
| Immunogen Description | Recombinant Protein |
| Target Name | Phosphoserine |
| Concentration | 1mg/ml |
| Formulation | PBS, pH 7.4, containing 0.02% sodium azide as Preservative and 50% Glycerol. |
| Storage | Store at -20°C/1 year |

Application Details

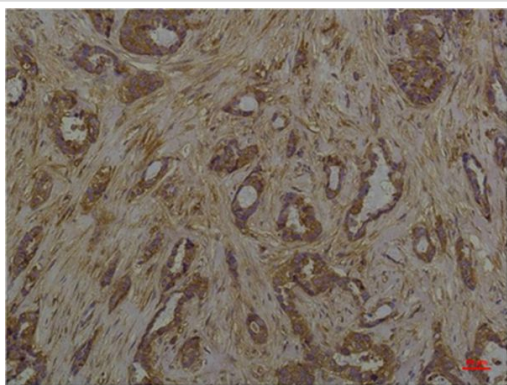
Western blotting: 1:2000-1:5000

Immunohistochemistry: 1:50-1:200

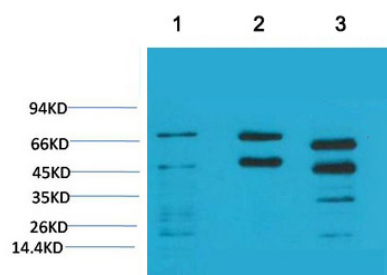
Images



Immunohistochemical analysis of paraffin-embedded Human Lung Carcinoma using Phosphoserine Mouse mAb diluted at 1:200.



Immunohistochemical analysis of paraffin-embedded Human Breast Carcinoma using Phosphoserine Mouse mAb diluted at 1:200.



Western blot analysis of 1) Hela, 2) Rat Brain Tissue, 3) Mouse Brain Tissue with Phosphoserine Mouse mAb diluted at 1:2,000.

Note: This product is for in vitro research use only and is not intended for use in humans or animals.