

# His-Tag Monoclonal Antibody(4E6)

Catalog No: #AB44006



Package Size: #AB44006-1 50ul #AB44006-2 100ul

Orders: [order@abscitech.com](mailto:order@abscitech.com)  
Support: [tech@abscitech.com](mailto:tech@abscitech.com)

## Description

Product Name	His-Tag Monoclonal Antibody(4E6)
Host Species	Mouse
Clonality	Monoclonal
Clone No.	4E6
Isotype	IgG1
Applications	WB IP IF
Specificity	The antibody detects C-terminal, internal, and N-terminal His-tag fusion proteins.
Immunogen Type	Peptide
Immunogen Description	Synthetic Peptide
Target Name	His-Tag
Concentration	1mg/ml
Formulation	PBS, pH 7.4, containing 0.02% sodium azide as Preservative and 50% Glycerol.
Storage	Store at -20°C/1 year

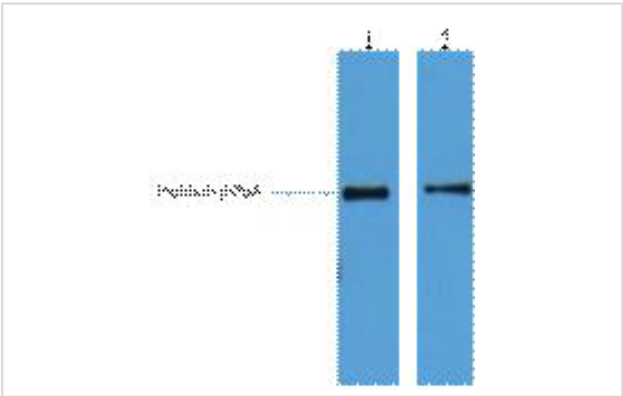
## Application Details

Western blotting: 1:500-1:2000

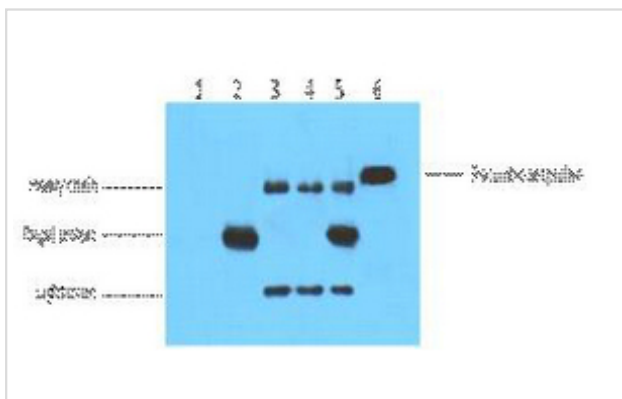
Immunoprecipitation: 1:100

Immunofluorescence: 1:50-1:100

## Images

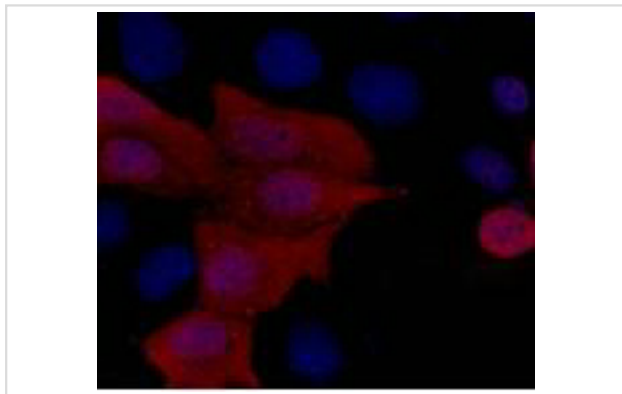


2ug His fusion protein+ Primary antibody dilution at  
1) 1:5000  
2) 1:10000



IP antibody use: 5ug His Mouse IgG1 per ml Lysate, WB 1:3000

- 1) untransfected 293 cell lysate
- 2) transfected 293 cell lysate with His-tag fusion protein
- 3) IP (untransfected 293+anti-His mAb+ Protein G agarose)
- 4) IP (transfected 293+ normal Mouse IgG)



IF analysis of 293 cells transfected with a His-tag protein, 1:1000 dilution (blue DAPI, red anti-His)

Note: This product is for in vitro research use only and is not intended for use in humans or animals.