

MEK1(Phospho-Ser221) Antibody

Catalog No: #AB11161



Package Size: #AB11161-1 50ul #AB11161-2 100ul #AB11161-4 25ul

Orders: order@abscitech.comSupport: tech@abscitech.com

Description

| | |
|-----------------------|---|
| Product Name | MEK1(Phospho-Ser221) Antibody |
| Host Species | Rabbit |
| Clonality | Polyclonal |
| Purification | Antibodies were produced by immunizing rabbits with synthetic phosphopeptide and KLH conjugates. Antibodies were purified by affinity-chromatography using epitope-specific phosphopeptide. Non-phospho specific antibodies were removed by chromatography using non-phosphopeptide. |
| Applications | WB IHC IF |
| Species Reactivity | Hu Ms Rt |
| Specificity | The antibody detects endogenous level of MEK1 only when phosphorylated at serine 221. |
| Immunogen Type | Peptide-KLH |
| Immunogen Description | Peptide sequence around phosphorylation site of serine 221 (A-N-S(p)-F-V) derived from Human MEK1. |
| Target Name | MEK1 |
| Modification | Phospho-Ser221 |
| Other Names | ERK activator kinase 1; MAP kinase kinase 1; MAP2K1; MAPK/ERK kinase 1; MAPKK 1 |
| Accession No. | Swiss-Prot: Q02750NCBI Protein: NP_002746.1 |
| Concentration | 1.0mg/ml |
| Formulation | Supplied at 1.0mg/mL in phosphate buffered saline (without Mg ²⁺ and Ca ²⁺), pH 7.4, 150mM NaCl, 0.02% sodium azide and 50% glycerol. |
| Storage | Store at -20°C for long term preservation (recommended). Store at 4°C for short term use. |

Application Details

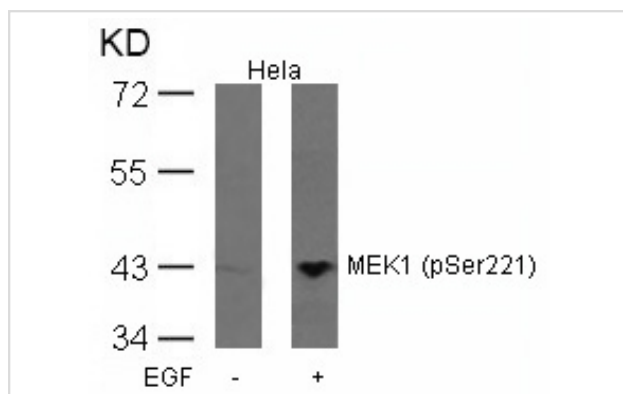
Predicted MW: 45kd

Western blotting: 1:500~1:1000

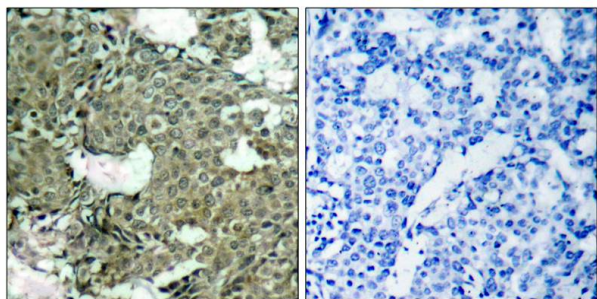
Immunohistochemistry: 1:50~1:100

Immunofluorescence: 1:100~1:200

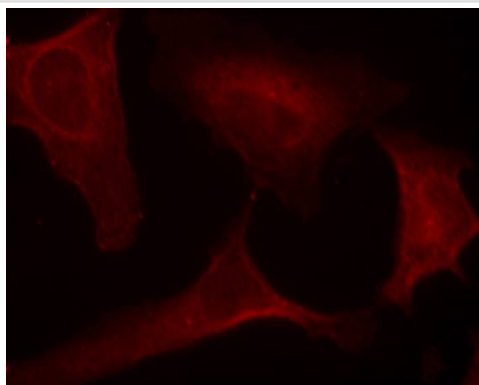
Images



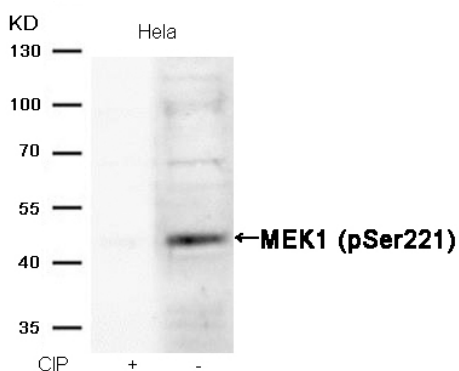
Western blot analysis of extracts from HeLa cells untreated or treated with EGF using MEK1(Phospho-Ser221) Antibody #AB11161.



Immunohistochemical analysis of paraffin-embedded human breast carcinoma tissue using MEK1(Phospho-Ser221) Antibody #AB11161(left) or the same antibody preincubated with blocking peptide(right).



Immunofluorescence staining of methanol-fixed HeLa cells using MEK1(Phospho-Ser221) Antibody #AB11161.



Western blot analysis of extracts from HeLa cells, treated with calf intestinal phosphatase (CIP), using MEK1 (Phospho-Ser221) Antibody #AB11161.

Background

Catalyzes the concomitant phosphorylation of a threonine and a tyrosine residue in a Thr-Glu-Tyr sequence located in MAP kinases. Activates ERK1 and ERK2 MAP kinases.

Zebisch A, et al. (2006) Cancer Res; 66(7): 3401-8.

Luciano BS, et al. (2006) J Biol Chem; 279(50): 52117-23.

Wang X, et al. (2003) Oncogene; 22(1): 109-16.

Gopalbhai K, et al. (2003) J Biol Chem; 278(10): 8118-25.

Ling MT, et al. (2002) Oncogene; 21(55): 8498-505.

Note: This product is for in vitro research use only and is not intended for use in humans or animals.