

Cleaved-Caspase-3 p17 (D175) Polyclonal Antibody

Catalog No: #AB40500



Package Size: #40500-1 50ul #40500-2 100ul

Orders: order@abscitech.comSupport: tech@abscitech.com

Description

Product Name	Cleaved-Caspase-3 p17 (D175) Polyclonal Antibody
Host Species	Rabbit
Clonality	Polyclonal
Purification	The antibody was affinity-purified from rabbit antiserum by affinity-chromatography using epitope-specific immunogen.
Applications	WB IHC IF
Species Reactivity	Hu Ms Rt
Specificity	Cleaved-Caspase-3 p17 (D175) Polyclonal Antibody detects endogenous levels of fragment of activated Caspase-3 p17 protein resulting from cleavage adjacent to D175.
Immunogen Description	Synthesized peptide derived from the Internal region of human Caspase-3 p17.
Target Name	Cleaved-Caspase-3 p17
Other Names	CASP3; CPP32; Caspase-3; CASP-3; Apopain; Cysteine protease CPP32; CPP-32; Protein Yama; SREBP cleavage activity 1; SCA-1
Accession No.	Swiss-Prot: P42574NCBI Gene ID: 836
SDS-PAGE MW	20kd
Concentration	1mg/ml
Formulation	Liquid in PBS containing 50% glycerol, 0.5% BSA and 0.02% sodium azide.
Storage	Store at -20°C/1 year

Application Details

Western Blot: 1/500 - 1/2000.

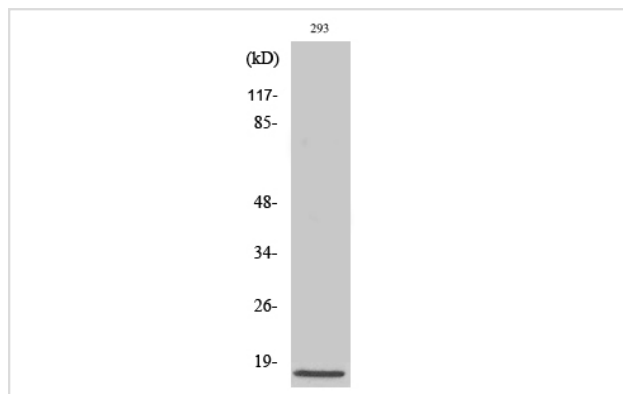
Immunohistochemistry: 1/100 - 1/300.

Immunofluorescence: 1:100~1:200

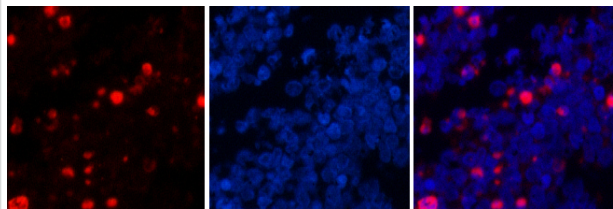
ELISA: 1/20000.

Not yet tested in other applications.

Images



Western Blot analysis of 293 cells using Cleaved-Caspase-3 p17 (D175) Polyclonal Antibody

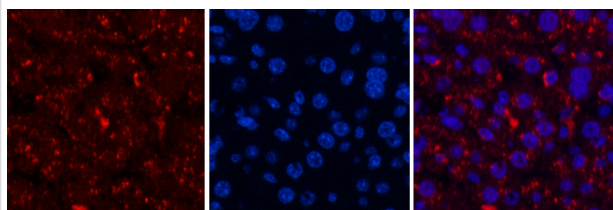


A

B

C

Immunofluorescence staining of methanol-fixed Human lung cancer cells using Cleaved-Caspase-3 p17 (D175) Polyclonal Antibody #40500.

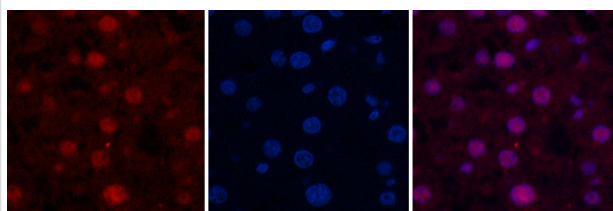


A

B

C

Immunofluorescence staining of methanol-fixed Mouse liver cells using Cleaved-Caspase-3 p17 (D175) Polyclonal Antibody #40500.



A

B

C

Immunofluorescence staining of methanol-fixed Rat liver cells using Cleaved-Caspase-3 p17 (D175) Polyclonal Antibody #40500.

Note: This product is for in vitro research use only and is not intended for use in humans or animals.