

## Histone H3 (Acetyl-Lys123) Polyclonal Antibody

Catalog No: #ABHW143



Package Size: #HW143-1 50ul #HW143-2 100ul

Orders: [order@abscitech.com](mailto:order@abscitech.com)Support: [tech@abscitech.com](mailto:tech@abscitech.com)

## Description

Product Name	Histone H3 (Acetyl-Lys123) Polyclonal Antibody
Host Species	Rabbit
Clonality	Polyclonal
Purification	The antibody was affinity-purified from rabbit antiserum by affinity-chromatography using epitope-specific immunogen.
Applications	WB ELISA
Species Reactivity	Hu Ms Rt
Specificity	Acetyl-Histone H3 (K123) Polyclonal Antibody detects endogenous levels of Histone H3 protein only when acetylation at K123.
Immunogen Description	Synthesized peptide derived from the C-terminal region of human Histone H3 around the acetylation site of K123.
Target Name	Histone H3
Modification	Acetyl-Lys123
Other Names	HIST1H3A; H3FA; HIST1H3B; H3FL; HIST1H3C; H3FC; HIST1H3D; H3FB; HIST1H3E; H3FD; HIST1H3F; H3FI; HIST1H3G; H3FH; HIST1H3H; H3FK; HIST1H3I; H3FF; HIST1H3J; H3FJ; Histone H3.1; Histone H3/a; Histone H3/b; Histone H3/c; Histone H3/d; Histone H3/f; Histone H3/
Accession No.	Swiss-Prot: P68431/Q71DI3/P84243/Q6NXT2NCBI Gene ID: 8350/8351/8352/8353/8354/8355/8356/8357/8358/8968/126961/333932/653604/3020/3021/440093
Target Species	human
SDS-PAGE MW	17kd
Concentration	1mg/ml
Formulation	Liquid in PBS containing 50% glycerol, 0.5% BSA and 0.02% sodium azide.
Storage	Store at -20°C/1 year

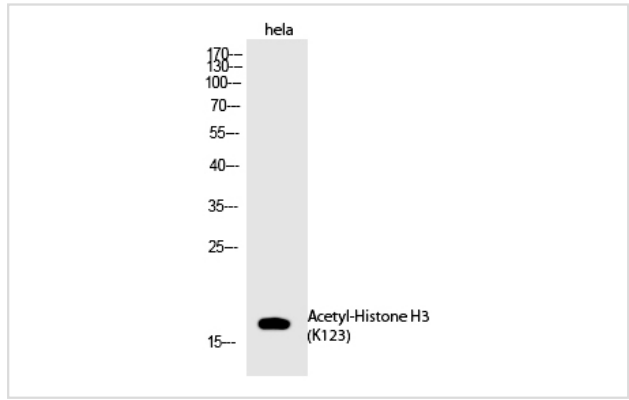
## Application Details

Western blotting: 1/500 - 1/2000

ELISA: 1/10000

Not yet tested in other applications

## Images



Western Blot analysis of hela cells using Acetyl-Histone H3 (K123) Polyclonal Antibody

Note: This product is for in vitro research use only and is not intended for use in humans or animals.