

## MKK3(Phospho-Ser189) Antibody

Catalog No: #AB11145



Package Size: #AB11145-1 50ul #AB11145-2 100ul #AB11145-4 25ul

Orders: [order@abscitech.com](mailto:order@abscitech.com)Support: [tech@abscitech.com](mailto:tech@abscitech.com)

## Description

Product Name	MKK3(Phospho-Ser189) Antibody
Host Species	Rabbit
Clonality	Polyclonal
Purification	Antibodies were produced by immunizing rabbits with synthetic phosphopeptide and KLH conjugates. Antibodies were purified by affinity-chromatography using epitope-specific phosphopeptide. Non-phospho specific antibodies were removed by chromatography using non-phosphopeptide.
Applications	WB IHC IF
Species Reactivity	Human Mouse Rat
Specificity	The antibody detects endogenous level of MKK3 only when phosphorylated at serine189.
Immunogen Type	Peptide-KLH
Immunogen Description	Peptide sequence around phosphorylation site of serine 189 (V-D-S(p)-V-A) derived from Human MKK3.
Target Name	MKK3
Modification	Phospho-Ser189
Other Names	MAP kinase kinase 3; MAP2K3; MAPK/ERK kinase 3; MAPKK 3; MEK3
Accession No.	Swiss-Prot: P46734NCBI Protein: NP_002747.2
Concentration	1.0mg/ml
Formulation	Supplied at 1.0mg/mL in phosphate buffered saline (without Mg <sup>2+</sup> and Ca <sup>2+</sup> ), pH 7.4, 150mM NaCl, 0.02% sodium azide and 50% glycerol.
Storage	Store at -20°C for long term preservation (recommended). Store at 4°C for short term use.

## Application Details

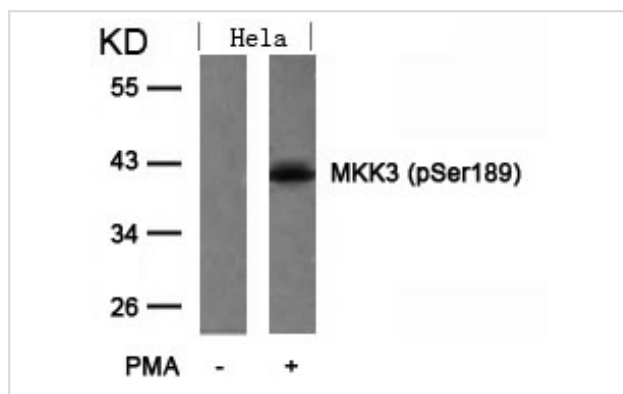
Predicted MW: 40kd

Western blotting: 1:500~1:1000

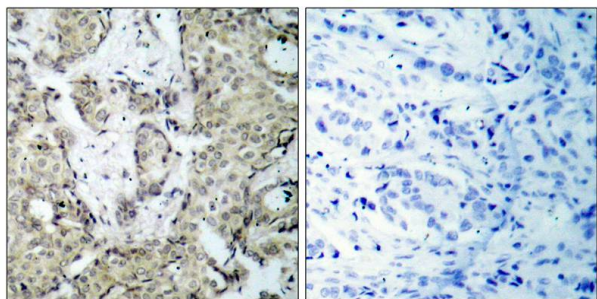
Immunohistochemistry: 1:50~1:100

Immunofluorescence: 1:100~1:200

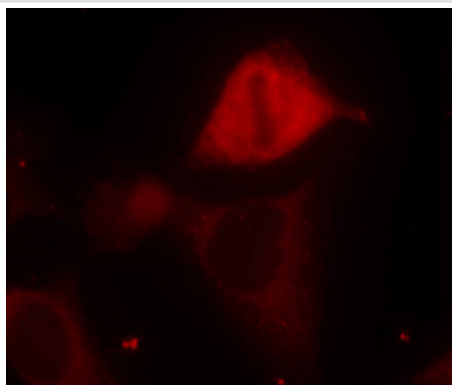
## Images



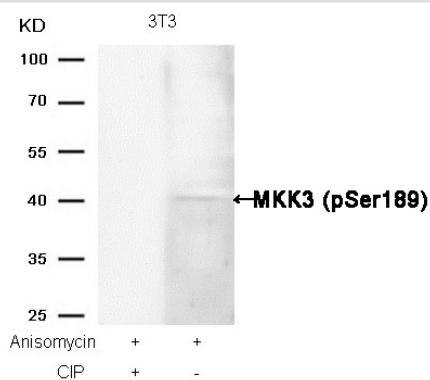
Western blot analysis of extracts from HeLa cells untreated or treated with PMA using MKK3(Phospho-Ser189) Antibody #AB11145.



Immunohistochemical analysis of paraffin-embedded human breast carcinoma tissue using MKK3(Phospho-Ser189) Antibody #AB11145(left) or the same antibody preincubated with blocking peptide(right).



Immunofluorescence staining of methanol-fixed HeLa cells using MKK3(Phospho-Ser189) Antibody #AB11145.



Western blot analysis of extracts from 3T3 cells, treated with Anisomycin or calf intestinal phosphatase (CIP), using MKK3 (Phospho-Ser189) Antibody #AB11145.

## Background

Dual specificity kinase. Is activated by cytokines and environmental stress in vivo. Catalyzes the concomitant phosphorylation of a threonine and a tyrosine residue in the MAP kinase p38.

Wang W, et al. (2002) Mol Cell Biol ; 22(10): 3389-403.

Raingeaud J, et al. (1996) Mol Cell Biol; 16(3): 1247-55.

**Note:** This product is for in vitro research use only and is not intended for use in humans or animals.