

Tau(Phospho-Ser235) Antibody

Catalog No: #AB11106



Package Size: #AB11106-1 50ul #AB11106-2 100ul #AB11106-4 25ul

Orders: order@abscitech.com

Support: tech@abscitech.com

Description

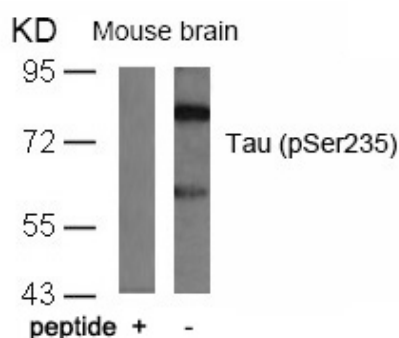
Product Name	Tau(Phospho-Ser235) Antibody
Host Species	Rabbit
Clonality	Polyclonal
Purification	Antibodies were produced by immunizing rabbits with synthetic phosphopeptide and KLH conjugates. Antibodies were purified by affinity-chromatography using epitope-specific phosphopeptide. Non-phospho specific antibodies were removed by chromatography using non-phosphopeptide.
Applications	WB
Species Reactivity	Hu Ms Rt
Specificity	The antibody detects endogenous level of Tau only when phosphorylated at serine 235.
Immunogen Type	Peptide-KLH
Immunogen Description	Peptide sequence around phosphorylation site of serine 235 (P-K-S(p)-P-S) derived from Human Tau.
Target Name	Tau
Modification	Phospho-Ser235
Other Names	MAPT; MTAPT; MTBT1; Neurofibrillary tangle protein; PHF-tau
Accession No.	Swiss-Prot: P10636NCBI Protein: NP_001116538.1
Concentration	1.0mg/ml
Formulation	Supplied at 1.0mg/mL in phosphate buffered saline (without Mg ²⁺ and Ca ²⁺), pH 7.4, 150mM NaCl, 0.02% sodium azide and 50% glycerol.
Storage	Store at -20°C for long term preservation (recommended). Store at 4°C for short term use.

Application Details

Predicted MW: 48 62 78 kd

Western blotting: 1:500~1:1000

Images



Western blot analysis of extracts from mouse brain tissue using Tau(Phospho-Ser235) Antibody #AB11106 and the same antibody preincubated with blocking peptide.

Background

Promotes microtubule assembly and stability, and might be involved in the establishment and maintenance of neuronal polarity. The C-terminus binds axonal microtubules while the N-terminus binds neural plasma membrane components, suggesting that tau functions as a linker protein between both. Axonal polarity is predetermined by tau localization (in the neuronal cell) in the domain of the cell body defined by the centrosome. The short isoforms allow plasticity of the cytoskeleton whereas the longer isoforms may preferentially play a role in its stabilization.

Alonso Adel C, et al. (2004) J Biol Chem. 279(33): 34873-34881.

Liu F, et al. (2002) FEBS Lett. 530(1-3): 209-214.

Sengupta A, et al. (1998) Arch Biochem Biophys. 357(2): 299-309.

Note: This product is for in vitro research use only and is not intended for use in humans or animals.